

# Pan Methyl Lysine rabbit pAb

Cat No.:ES20650

For research use only

## Overview

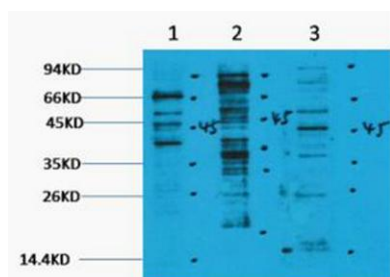
Product Name	Pan Methyl Lysine rabbit pAb
Host species	Rabbit
Applications	WB
Species Cross-Reactivity	Species independent
Recommended dilutions	WB: 1:1000-2000
Immunogen	Recombinant Protein of Pan Methyl Lysine
Specificity	The antibody detects endogenous protein Methylated Lysine.
Formulation	Liquid in PBS containing 50% glycerol, 0.5% BSA and 0.02% sodium azide.
Storage	Store at -20°C. Avoid repeated freeze-thaw cycles.
Protein Name	
Gene Name	
Cellular localization	
Purification	The antibody was affinity-purified from rabbit antiserum by affinity-chromatography using epitope-specific immunogen.
Clonality	Polyclonal
Concentration	
Observed band	
Human Gene ID	
Human Swiss-Prot Number	
Alternative Names	YM3254
Background	Lysine methylation occurs in three distinct states, having either one (me1), two (me2) or three (me3) methyl groups attached to the amine group of the lysine side chain. In eukaryotes, histone H3 trimethylated at lysine 4 (H3K4me3) is associated with active chromatin and gene expression.





**ELK Biotechnology**

Western blot analysis of 1) HeLa, 2) 3T3, 3) Rat Brain tissue, diluted at 1:2000. Secondary antibody(catalog#:RS0002) was diluted at 1:20000



+86-27-59760950

ELKbio@ELKbiotech.com

[www.elkbiotech.com](http://www.elkbiotech.com)

23-2, No.388 Gaoxin 2nd Road,Wuhan East Lake Hi-tech Development Zone, Hubei , P.R.C