



VEGF Rabbit rabbit pAb

Cat No.:ES20599

For research use only

Overview

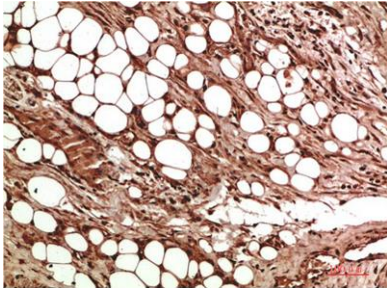
Product Name	VEGF Rabbit rabbit pAb
Host species	Rabbit
Applications	IF;WB;IHC;ELISA
Species Cross-Reactivity	Human;Rat;Mouse
Recommended dilutions	IF: 1:50-200 WB 1:500-2000, IHC 1:50-300 IHC 1:50-300
Immunogen	Recombinant Protein of VEGF of VEGFA
Specificity	VEGF protein detects endogenous levels of VEGFA
Formulation	Liquid in PBS containing 50% glycerol, 0.5% BSA and 0.02% sodium azide.
Storage	Store at -20°C. Avoid repeated freeze-thaw cycles.
Protein Name	VEGFA
Gene Name	VEGFA
Cellular localization	Secreted . VEGF121 is acidic and freely secreted. VEGF165 is more basic, has heparin-binding properties and, although a significant proportion remains cell-associated, most is freely secreted. VEGF189 is very basic, it is cell-associated after secretion a
Purification	The antibody was affinity-purified from rabbit antiserum by affinity-chromatography using epitope-specific immunogen.
Clonality	Polyclonal
Concentration	1 mg/ml
Observed band	21kD(monomer),42kD(dimer)
Human Gene ID	7422
Human Swiss-Prot Number	P15692
Alternative Names	VEGFA
Background	This gene is a member of the PDGF/VEGF growth factor family. It encodes a heparin-binding protein, which exists as a disulfide-linked homodimer. This growth factor induces proliferation and migration of vascular endothelial cells, and is essential for both



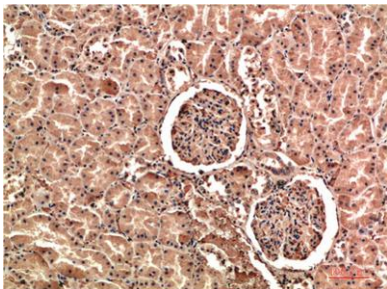


physiological and pathological angiogenesis. Disruption of this gene in mice resulted in abnormal embryonic blood vessel formation. This gene is upregulated in many known tumors and its expression is correlated with tumor stage and progression. Elevated levels of this protein are found in patients with POEMS syndrome, also known as Crow-Fukase syndrome. Allelic variants of this gene have been associated with microvascular complications of diabetes 1 (MVCD1) and atherosclerosis. Alternatively spliced transcript variants encoding different isoforms have been described. There is also evidence for alternative translation initiation fro

Immunohistochemical analysis of paraffin-embedded Human Liver Carcinoma Tissue using VEGF Rabbit pAb diluted at 1:500.



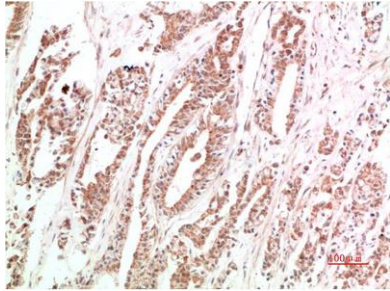
Immunohistochemical analysis of paraffin-embedded Human Kidney Tissue using VEGF Rabbit pAb diluted at 1:500.





ELK Biotechnology

Immunohistochemical analysis of paraffin-embedded Human Stomach Carcinoma Tissue using VEGF Rabbit pAb diluted at 1:500.



+86-27-59760950

ELKbio@ELKbiotech.com

www.elkbiotech.com

23-2, No.388 Gaoxin 2nd Road,Wuhan East Lake Hi-tech Development Zone, Hubei , P.R.C