

Smad7 (Acetyl Lys70) rabbit pAb

Cat No.:ES20125

For research use only

Overview

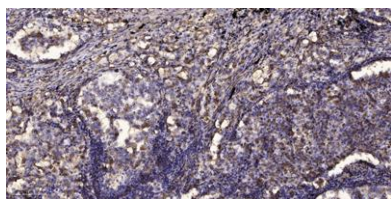
Product Name	Smad7 (Acetyl Lys70) rabbit pAb
Host species	Rabbit
Applications	WB;IHC
Species Cross-Reactivity	Human;Mouse;Rat
Recommended dilutions	WB 1:500-2000;IHC-p 1:50-300
Immunogen	Synthesized peptide derived from human Smad7 (Acetyl Lys70)
Specificity	This antibody detects endogenous levels of Human,Mouse,Rat Smad7 (Acetyl Lys70)
Formulation	Liquid in PBS containing 50% glycerol, 0.5% BSA and 0.02% sodium azide.
Storage	Store at -20°C. Avoid repeated freeze-thaw cycles.
Protein Name	Smad7 (Acetyl Lys70)
Gene Name	SMAD7 MADH7 MADH8
Cellular localization	Nucleus . Cytoplasm . Interaction with NEDD4L or RNF111 induces translocation from the nucleus to the cytoplasm (PubMed:16601693). TGF-beta stimulates its translocation from the nucleus to the cytoplasm. PDPK1 inhibits its translocation from the nucleus t
Purification	The antibody was affinity-purified from rabbit antiserum by affinity-chromatography using epitope-specific immunogen.
Clonality	Polyclonal
Concentration	1 mg/ml
Observed band	
Human Gene ID	4092
Human Swiss-Prot Number	O15105
Alternative Names	Mothers against decapentaplegic homolog 7 (MAD homolog 7;Mothers against DPP homolog 7;Mothers against decapentaplegic homolog 8;MAD homolog 8;Mothers against DPP homolog 8;SMAD family member 7;SMAD 7;Smad7;hSMAD7)





Background

The protein encoded by this gene is a nuclear protein that binds the E3 ubiquitin ligase SMURF2. Upon binding, this complex translocates to the cytoplasm, where it interacts with TGF-beta receptor type-1 (TGFB1), leading to the degradation of both the encoded protein and TGFB1. Expression of this gene is induced by TGFB1. Variations in this gene are a cause of susceptibility to colorectal cancer type 3 (CRCS3). Several transcript variants encoding different isoforms have been found for this gene. [provided by RefSeq, Jun 2010],



Immunohistochemical analysis of paraffin-embedded human Squamous cell carcinoma of lung. 1, Antibody was diluted at 1:200(4° overnight). 2, Tris-EDTA,pH9.0 was used for antigen retrieval. 3,Secondary antibody was diluted at 1:200(room temperature, 45min).

