



PROC (light chain, Cleaved-Leu179) rabbit pAb

Cat No.:ES20045

For research use only

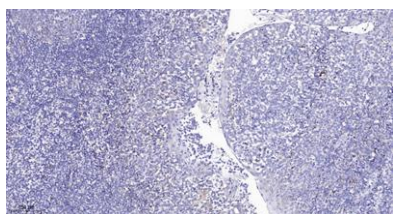
Overview

Product Name	PROC (light chain, Cleaved-Leu179) rabbit pAb
Host species	Rabbit
Applications	WB;ELISA;IHC
Species Cross-Reactivity	Human;Rat;Mouse;
Recommended dilutions	WB 1:500-2000;IHC-p 1:50-300; ELISA 2000-20000
Immunogen	Synthesized peptide derived from human PROC (light chain, Cleaved-Leu179)
Specificity	This antibody detects endogenous levels of Human PROC (light chain, Cleaved-Leu179, protein was cleaved amino acid sequence between 179-180)
Formulation	Liquid in PBS containing 50% glycerol, 0.5% BSA and 0.02% sodium azide.
Storage	Store at -20°C. Avoid repeated freeze-thaw cycles.
Protein Name	PROC (light chain, Cleaved-Leu179)
Gene Name	PROC
Cellular localization	Secreted . Golgi apparatus . Endoplasmic reticulum .
Purification	The antibody was affinity-purified from rabbit antiserum by affinity-chromatography using epitope-specific immunogen.
Clonality	Polyclonal
Concentration	1 mg/ml
Observed band	17 45kD
Human Gene ID	5624
Human Swiss-Prot Number	P04070
Alternative Names	Vitamin K-dependent protein C (EC 3.4.21.69;Anticoagulant protein C;Autoprothrombin IIA;Blood coagulation factor XIV) [Cleaved into: Vitamin K-dependent protein C light chain; Vitamin K-dependent protein C heavy chain; Activation peptide]
Background	This gene encodes a vitamin K-dependent plasma glycoprotein. The encoded protein is cleaved to its





activated form by the thrombin-thrombomodulin complex. This activated form contains a serine protease domain and functions in degradation of the activated forms of coagulation factors V and VIII. Mutations in this gene have been associated with thrombophilia due to protein C deficiency, neonatal purpura fulminans, and recurrent venous thrombosis.[provided by RefSeq, Dec 2009],



Immunohistochemical analysis of paraffin-embedded human tonsil. 1, Antibody was diluted at 1:200(4° overnight). 2, Tris-EDTA,pH9.0 was used for antigen retrieval. 3,Secondary antibody was diluted at 1:200(room temperature, 45min).

