

# PGCA (Cleaved-Ala17) rabbit pAb

Cat No.:ES19949

For research use only

## Overview

Product Name	PGCA (Cleaved-Ala17) rabbit pAb
Host species	Rabbit
Applications	WB;ELISA;IHC
Species Cross-Reactivity	Human;Rat
Recommended dilutions	WB 1:500-2000;IHC-p 1:50-300; ELISA 2000-20000
Immunogen	Synthesized peptide derived from human PGCA (Cleaved-Ala17)
Specificity	This antibody detects endogenous levels of Human,Rat PGCA (Cleaved-Ala17, protein was cleaved amino acid sequence between 16-17)
Formulation	Liquid in PBS containing 50% glycerol, 0.5% BSA and 0.02% sodium azide.
Storage	Store at -20°C. Avoid repeated freeze-thaw cycles.
Protein Name	PGCA (Cleaved-Ala17)
Gene Name	ACAN AGC1 CSPG1 MSK16
Cellular localization	Secreted, extracellular space, extracellular matrix .
Purification	The antibody was affinity-purified from rabbit antiserum by affinity-chromatography using epitope-specific immunogen.
Clonality	Polyclonal
Concentration	1 mg/ml
Observed band	240-260kD
Human Gene ID	
Human Swiss-Prot Number	P16112
Alternative Names	Aggrecan core protein (Cartilage-specific proteoglycan core protein;CSPCP;Chondroitin sulfate proteoglycan core protein 1;Chondroitin sulfate proteoglycan 1) [Cleaved into: Aggrecan core protein 2]
Background	alternative products:Additional isoforms seem to exist,developmental stage:Expression was detected in chondrocytes throughout the developing skeleton.,disease:Defects in ACAN are the cause of



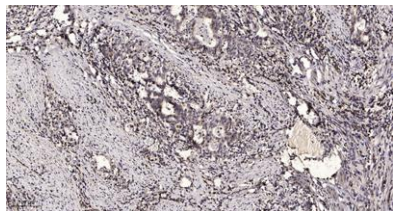


spondyloepiphyseal dysplasia type Kimberley (SEDK) [MIM:608361]. Spondyloepiphyseal dysplasias are a heterogeneous group of congenital chondrodysplasias that specifically affect epiphyses and vertebrae. The autosomal dominant SEDK is associated with premature degenerative arthropathy.,domain:Two globular domains, G1 and G2, comprise the N-terminus of the proteoglycan, while another globular region, G3, makes up the C-terminus. G1 contains Link domains and thus consists of three disulfide-bonded loop structures designated as the A, B, B' motifs. G2 is similar to G1. The keratan sulfate (KS) and the chondroitin sulfate (CS) attachment domains lie between G2 and G3.,function:This proteoglycan is a major component of extracellular matrix of cartilagenous tissues. A major function of this protein is to resist compression in cartilage. It binds avidly to hyaluronic acid via an N-terminal globular region.,online information:Aggrecan,PTM:Contains mostly chondroitin sulfate, but also keratan sulfate chains, N-linked and O-linked oligosaccharides. The release of aggrecan fragments from articular cartilage into the synovial fluid at all stages of human osteoarthritis is the result of cleavage by aggrecanase.,similarity:Belongs to the aggrecan/versican proteoglycan family.,similarity:Contains 1 C-type lectin domain.,similarity:Contains 1 EGF-like domain.,similarity:Contains 1 Ig-like V-type (immunoglobulin-like) domain.,similarity:Contains 1 Sushi (CCP/SCR) domain.,similarity:Contains 4 Link domains.,subunit:Interacts with FBLN1.,tissue specificity:Restricted to cartilages.,





**ELK Biotechnology**



Immunohistochemical analysis of paraffin-embedded human Gastric adenocarcinoma. 1, Antibody was diluted at 1:200(4° overnight). 2, Tris-EDTA,pH9.0 was used for antigen retrieval. 3,Secondary antibody was diluted at 1:200(room temperature, 45min).



+86-27-59760950

[ELKbio@ELKbiotech.com](mailto:ELKbio@ELKbiotech.com)

[www.elkbiotech.com](http://www.elkbiotech.com)

23-2, No.388 Gaoxin 2nd Road,Wuhan East Lake Hi-tech Development Zone, Hubei , P.R.C