



Cks1 rabbit pAb

Cat No.:ES1984

For research use only

Overview

Product Name	Cks1 rabbit pAb
Host species	Rabbit
Applications	WB;IF;ELISA
Species Cross-Reactivity	Human;Mouse
Recommended dilutions	Western Blot: 1/500 - 1/2000. Immunofluorescence: 1/200 - 1/1000. ELISA: 1/20000. Not yet tested in other applications.
Immunogen	The antiserum was produced against synthesized peptide derived from human CKS1. AA range:10-59
Specificity	Cks1 Polyclonal Antibody detects endogenous levels of Cks1 protein.
Formulation	Liquid in PBS containing 50% glycerol, 0.5% BSA and 0.02% sodium azide.
Storage	Store at -20°C. Avoid repeated freeze-thaw cycles.
Protein Name	Cyclin-dependent kinases regulatory subunit 1
Gene Name	CKS1B
Cellular localization	cyclin-dependent protein kinase holoenzyme complex,nucleoplasm,SCF ubiquitin ligase complex,
Purification	The antibody was affinity-purified from rabbit antiserum by affinity-chromatography using epitope-specific immunogen.
Clonality	Polyclonal
Concentration	1 mg/ml
Observed band	9kD
Human Gene ID	1163
Human Swiss-Prot Number	P61024
Alternative Names	CKS1B; CKS1; PNAS-143; PNAS-16; Cyclin-dependent kinases regulatory subunit 1; CKS-1
Background	CKS1B protein binds to the catalytic subunit of the cyclin dependent kinases and is essential for their biological function. The CKS1B mRNA is found to be expressed in different patterns through the cell cycle in HeLa cells, which reflects a specialized role for the

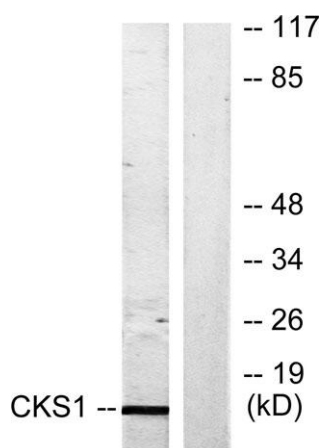
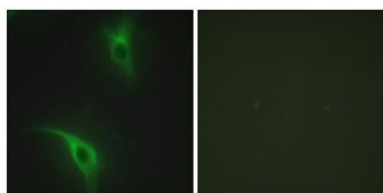


encoded protein. At least two transcript variants have been identified for this gene, and it appears that only one of them encodes a protein. [provided by RefSeq, Sep 2008],



Western Blot analysis of various cells using Cks1 Polyclonal Antibody cells nucleus extracted by Minute TM Cytoplasmic and Nuclear Fractionation kit (SC-003, Invent biotech, MN, USA).

Immunofluorescence analysis of HeLa cells, using CKS1 Antibody. The picture on the right is blocked with the synthesized peptide.



Western blot analysis of lysates from Jurkat cells, treated with serum 20% 15', using CKS1 Antibody. The lane on the right is blocked with the synthesized peptide.

