

Cerebellin 2 rabbit pAb

Cat No.:ES1955

For research use only

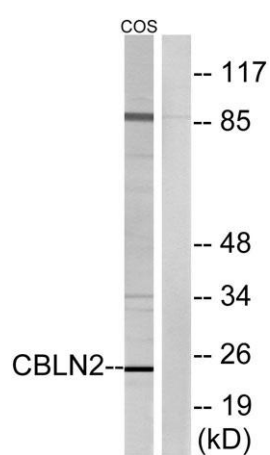
Overview

Product Name	Cerebellin 2 rabbit pAb
Host species	Rabbit
Applications	WB;ELISA
Species Cross-Reactivity	Human;Mouse;Rat;Monkey
Recommended dilutions	Western Blot: 1/500 - 1/2000. ELISA: 1/40000. Not yet tested in other applications.
Immunogen	The antiserum was produced against synthesized peptide derived from human CBLN2. AA range:161-210
Specificity	Cerebellin 2 Polyclonal Antibody detects endogenous levels of Cerebellin 2 protein.
Formulation	Liquid in PBS containing 50% glycerol, 0.5% BSA and 0.02% sodium azide.
Storage	Store at -20°C. Avoid repeated freeze-thaw cycles.
Protein Name	Cerebellin-2
Gene Name	CBLN2
Cellular localization	Secreted .
Purification	The antibody was affinity-purified from rabbit antiserum by affinity-chromatography using epitope-specific immunogen.
Clonality	Polyclonal
Concentration	1 mg/ml
Observed band	24kD
Human Gene ID	147381
Human Swiss-Prot Number	Q8IUUK8
Alternative Names	CBLN2; Cerebellin-2
Background	similarity:Contains 1 C1q domain.,subunit:May interact with CBLN1, CBLN3 and CBLN4.,





Western Blot analysis of various cells using Cerebellin 2 Polyclonal Antibody



Western blot analysis of lysates from COS cells, using CBLN2 Antibody. The lane on the right is blocked with the synthesized peptide.

