

Centrobin rabbit pAb

Cat No.:ES1948

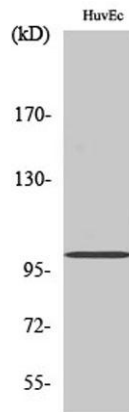
For research use only

Overview

Product Name	Centrobin rabbit pAb
Host species	Rabbit
Applications	WB;IHC;IF;ELISA
Species Cross-Reactivity	Human;Rat;Mouse;
Recommended dilutions	Western Blot: 1/500 - 1/2000. Immunohistochemistry: 1/100 - 1/300. ELISA: 1/5000. Not yet tested in other applications.
Immunogen	The antiserum was produced against synthesized peptide derived from human CNTROB. AA range:591-640
Specificity	Centrobin Polyclonal Antibody detects endogenous levels of Centrobin protein.
Formulation	Liquid in PBS containing 50% glycerol, 0.5% BSA and 0.02% sodium azide.
Storage	Store at -20°C. Avoid repeated freeze-thaw cycles.
Protein Name	Centrobin
Gene Name	CNTROB
Cellular localization	Cytoplasm, cytoskeleton, microtubule organizing center, centrosome, centriole . Centriole-associated, asymmetrically localizes to the daughter centriole.
Purification	The antibody was affinity-purified from rabbit antiserum by affinity-chromatography using epitope-specific immunogen.
Clonality	Polyclonal
Concentration	1 mg/ml
Observed band	100kD
Human Gene ID	116840
Human Swiss-Prot Number	Q8N137
Alternative Names	CNTROB; LIP8; PP1221; Centrobin; Centrosomal BRCA2-interacting protein; LYST-interacting protein 8
Background	This gene encodes a centrosomal protein that interacts with BRCA2, and is required for centriole



duplication and cytokinesis. Alternatively spliced transcript variants encoding different isoforms have been described for this gene. [provided by RefSeq, Aug 2011],



Western Blot analysis of various cells using Centrobins Polyclonal Antibody

Immunohistochemistry analysis of paraffin-embedded human brain, using CNTROB Antibody. The picture on the right is blocked with the synthesized peptide.

