



# AL1L1 rabbit pAb

Cat No.:ES18410

For research use only

## Overview

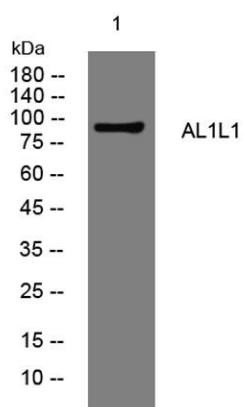
|                          |                                                                                                                                                                                                                                                                                                                                                                                                                                                |
|--------------------------|------------------------------------------------------------------------------------------------------------------------------------------------------------------------------------------------------------------------------------------------------------------------------------------------------------------------------------------------------------------------------------------------------------------------------------------------|
| Product Name             | AL1L1 rabbit pAb                                                                                                                                                                                                                                                                                                                                                                                                                               |
| Host species             | Rabbit                                                                                                                                                                                                                                                                                                                                                                                                                                         |
| Applications             | WB                                                                                                                                                                                                                                                                                                                                                                                                                                             |
| Species Cross-Reactivity | Human; Mouse;Rat                                                                                                                                                                                                                                                                                                                                                                                                                               |
| Recommended dilutions    | WB 1: 500-2000                                                                                                                                                                                                                                                                                                                                                                                                                                 |
| Immunogen                | Synthesized peptide derived from human AL1L1 AA range: 512-562                                                                                                                                                                                                                                                                                                                                                                                 |
| Specificity              | This antibody detects endogenous levels of AL1L1 at Human/Mouse/Rat                                                                                                                                                                                                                                                                                                                                                                            |
| Formulation              | Liquid in PBS containing 50% glycerol, 0.5% BSA and 0.02% sodium azide.                                                                                                                                                                                                                                                                                                                                                                        |
| Storage                  | Store at -20°C. Avoid repeated freeze-thaw cycles.                                                                                                                                                                                                                                                                                                                                                                                             |
| Protein Name             | AL1L1                                                                                                                                                                                                                                                                                                                                                                                                                                          |
| Gene Name                | ALDH1L1 FTHFD                                                                                                                                                                                                                                                                                                                                                                                                                                  |
| Cellular localization    | Cytoplasm, cytosol .                                                                                                                                                                                                                                                                                                                                                                                                                           |
| Purification             | The antibody was affinity-purified from rabbit antiserum by affinity-chromatography using epitope-specific immunogen.                                                                                                                                                                                                                                                                                                                          |
| Clonality                | Polyclonal                                                                                                                                                                                                                                                                                                                                                                                                                                     |
| Concentration            | 1 mg/ml                                                                                                                                                                                                                                                                                                                                                                                                                                        |
| Observed band            |                                                                                                                                                                                                                                                                                                                                                                                                                                                |
| Human Gene ID            | 10840                                                                                                                                                                                                                                                                                                                                                                                                                                          |
| Human Swiss-Prot Number  | O75891                                                                                                                                                                                                                                                                                                                                                                                                                                         |
| Alternative Names        |                                                                                                                                                                                                                                                                                                                                                                                                                                                |
| Background               | The protein encoded by this gene catalyzes the conversion of 10-formyltetrahydrofolate, nicotinamide adenine dinucleotide phosphate (NADP+), and water to tetrahydrofolate, NADPH, and carbon dioxide. The encoded protein belongs to the aldehyde dehydrogenase family. Loss of function or expression of this gene is associated with decreased apoptosis, increased cell motility, and cancer progression. There is an antisense transcript |





**ELK Biotechnology**

that overlaps on the opposite strand with this gene locus. Alternative splicing results in multiple transcript variants. [provided by RefSeq, Jun 2012],



Western blot analysis of lysates from HpeG2 cells, primary antibody was diluted at 1:1000, 4°over night



+86-27-59760950

ELKbio@ELKbiotech.com

[www.elkbiotech.com](http://www.elkbiotech.com)

23-2, No.388 Gaoxin 2nd Road,Wuhan East Lake Hi-tech Development Zone, Hubei , P.R.C