

AP3M2 rabbit pAb

Cat No.:ES18306

For research use only

Overview

Product Name	AP3M2 rabbit pAb
Host species	Rabbit
Applications	WB
Species Cross-Reactivity	Human; Mouse;Rat
Recommended dilutions	WB 1: 500-2000
Immunogen	Synthesized peptide derived from human AP3M2 AA range: 274-324
Specificity	This antibody detects endogenous levels of AP3M2 at Human/Mouse/Rat
Formulation	Liquid in PBS containing 50% glycerol, 0.5% BSA and 0.02% sodium azide.
Storage	Store at -20°C. Avoid repeated freeze-thaw cycles.
Protein Name	AP3M2
Gene Name	AP3M2
Cellular localization	Golgi apparatus. Cytoplasmic vesicle membrane ; Peripheral membrane protein ; Cytoplasmic side . Component of the coat surrounding the cytoplasmic face of coated vesicles located at the Golgi complex. .
Purification	The antibody was affinity-purified from rabbit antiserum by affinity-chromatography using epitope-specific immunogen.
Clonality	Polyclonal
Concentration	1 mg/ml
Observed band	
Human Gene ID	10947
Human Swiss-Prot Number	P53677
Alternative Names	
Background	This gene encodes a subunit of the heterotetrameric adaptor-related protein complex 3 (AP-3), which belongs to the adaptor complexes medium subunits family. The AP-3 complex plays a role in protein trafficking to lysosomes and specialized organelles.

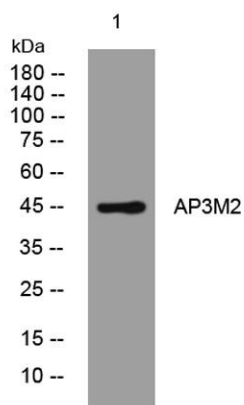




ELK Biotechnology

Multiple alternatively spliced variants, encoding the same protein, have been identified. [provided by RefSeq, Aug 2008],

Western blot analysis of lysates from MCF-7 cells, primary antibody was diluted at 1:1000, 4° over night



+86-27-59760950

ELKbio@ELKbiotech.com

www.elkbiotech.com

23-2, No.388 Gaoxin 2nd Road, Wuhan East Lake Hi-tech Development Zone, Hubei, P.R.C.