

# ARH40 rabbit pAb

Cat No.:ES18262

For research use only

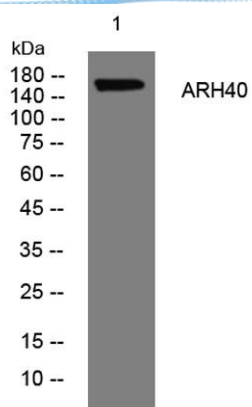
## Overview

Product Name	ARH40 rabbit pAb
Host species	Rabbit
Applications	WB
Species Cross-Reactivity	Human; Mouse
Recommended dilutions	WB 1: 500-2000
Immunogen	Synthesized peptide derived from human ARH40 AA range: 1261-1311
Specificity	This antibody detects endogenous levels of ARH40 at Human/Mouse
Formulation	Liquid in PBS containing 50% glycerol, 0.5% BSA and 0.02% sodium azide.
Storage	Store at -20°C. Avoid repeated freeze-thaw cycles.
Protein Name	ARH40
Gene Name	ARHGEF40 SOLO
Cellular localization	Cytoplasm . Concentrated in the perinuclear region.
Purification	The antibody was affinity-purified from rabbit antiserum by affinity-chromatography using epitope-specific immunogen.
Clonality	Polyclonal
Concentration	1 mg/ml
Observed band	
Human Gene ID	55701
Human Swiss-Prot Number	Q8TER5
Alternative Names	
Background	This gene encodes a protein similar to guanosine nucleotide exchange factors for Rho GTPases. The encoded protein contains in its C-terminus a GEF domain involved in exchange activity and a pleckstrin homology domain. Alternatively spliced transcripts that encode different proteins have been described. [provided by RefSeq, Mar 2014],





**ELK Biotechnology**



Western blot analysis of lysates from HpeG2 cells, primary antibody was diluted at 1:1000, 4° over night



+86-27-59760950

ELKbio@ELKbiotech.com

[www.elkbiotech.com](http://www.elkbiotech.com)

23-2, No.388 Gaoxin 2nd Road, Wuhan East Lake Hi-tech Development Zone, Hubei, P.R.C.