



ARL16 rabbit pAb

Cat No.:ES18254

For research use only

Overview

Product Name	ARL16 rabbit pAb
Host species	Rabbit
Applications	WB
Species Cross-Reactivity	Human;Rat;Mouse;
Recommended dilutions	WB 1: 500-2000
Immunogen	Synthesized peptide derived from human ARL16 AA range: 96-146
Specificity	This antibody detects endogenous levels of ARL16 at Human
Formulation	Liquid in PBS containing 50% glycerol, 0.5% BSA and 0.02% sodium azide.
Storage	Store at -20°C. Avoid repeated freeze-thaw cycles.
Protein Name	ARL16
Gene Name	ARL16
Cellular localization	Cytoplasm .
Purification	The antibody was affinity-purified from rabbit antiserum by affinity-chromatography using epitope-specific immunogen.
Clonality	Polyclonal
Concentration	1 mg/ml
Observed band	
Human Gene ID	339231
Human Swiss-Prot Number	Q0P5N6
Alternative Names	
Background	The protein encoded by this gene belongs to the ARL (ADP-ribosylation factor-like) family of proteins, which are structurally related to ADP-ribosylation factors (ARFs). This protein has been shown to have an inhibitory role in the cellular antiviral response. This gene product interacts with the C-terminal domain of the DEXD/H-box helicase 58 (DDX58) gene product. This interaction was found to suppress the association between the DDX58 gene

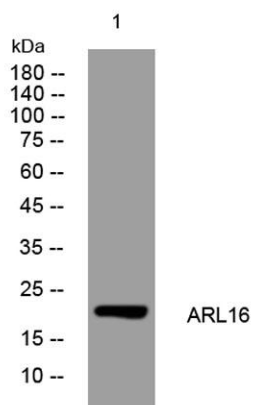




ELK Biotechnology

product and RNA, thereby negatively regulating the activity of the DDX58 gene product. [provided by RefSeq, Jul 2016],

Western blot analysis of lysates from HEK293 cells, primary antibody was diluted at 1:1000, 4°over night



+86-27-59760950

ELKbio@ELKbiotech.com

www.elkbiotech.com

23-2, No.388 Gaoxin 2nd Road,Wuhan East Lake Hi-tech Development Zone, Hubei , P.R.C