

# ARMC1 rabbit pAb

Cat No.:ES18250

For research use only

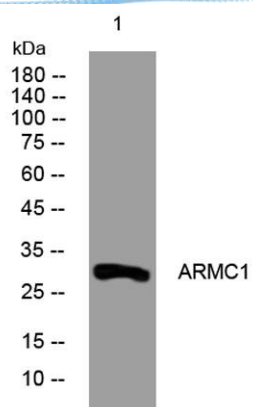
## Overview

Product Name	ARMC1 rabbit pAb
Host species	Rabbit
Applications	WB
Species Cross-Reactivity	Human; Mouse
Recommended dilutions	WB 1: 500-2000
Immunogen	Synthesized peptide derived from human ARMC1 AA range: 203-253
Specificity	This antibody detects endogenous levels of ARMC1 at Human/Mouse
Formulation	Liquid in PBS containing 50% glycerol, 0.5% BSA and 0.02% sodium azide.
Storage	Store at -20°C. Avoid repeated freeze-thaw cycles.
Protein Name	ARMC1
Gene Name	ARMC1 ARCP
Cellular localization	Cytoplasm . Mitochondrion . Mitochondrion outer membrane . Associates with the outer mitochondrion membrane, most likely through its C-terminus (PubMed:31644573). Not integrated into the mitochondrial outer membrane (PubMed:31644573). .
Purification	The antibody was affinity-purified from rabbit antiserum by affinity-chromatography using epitope-specific immunogen.
Clonality	Polyclonal
Concentration	1 mg/ml
Observed band	
Human Gene ID	55156
Human Swiss-Prot Number	Q9NVT9
Alternative Names	
Background	





**ELK Biotechnology**



Western blot analysis of lysates from KB cells, primary antibody was diluted at 1:1000, 4° over night



+86-27-59760950

ELKbio@ELKbiotech.com

[www.elkbiotech.com](http://www.elkbiotech.com)

23-2, No.388 Gaoxin 2nd Road, Wuhan East Lake Hi-tech Development Zone, Hubei, P.R.C.