

ARMX6 rabbit pAb

Cat No.:ES18248

For research use only

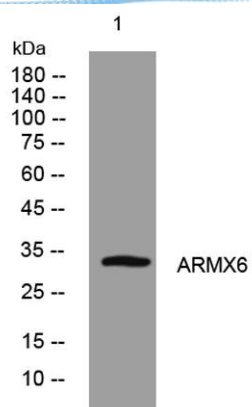
Overview

Product Name	ARMX6 rabbit pAb
Host species	Rabbit
Applications	WB
Species Cross-Reactivity	Human; Mouse;Rat
Recommended dilutions	WB 1: 500-2000
Immunogen	Synthesized peptide derived from human ARMX6 AA range: 152-202
Specificity	This antibody detects endogenous levels of ARMX6 at Human/Mouse/Rat
Formulation	Liquid in PBS containing 50% glycerol, 0.5% BSA and 0.02% sodium azide.
Storage	Store at -20°C. Avoid repeated freeze-thaw cycles.
Protein Name	ARMX6
Gene Name	ARMCX6
Cellular localization	Mitochondrion . Mitochondrion outer membrane ; Single-pass membrane protein .
Purification	The antibody was affinity-purified from rabbit antiserum by affinity-chromatography using epitope-specific immunogen.
Clonality	Polyclonal
Concentration	1 mg/ml
Observed band	
Human Gene ID	54470
Human Swiss-Prot Number	Q7L4S7
Alternative Names	
Background	





ELK Biotechnology



Western blot analysis of lysates from 293T cells, primary antibody was diluted at 1:1000, 4° over night



+86-27-59760950

ELKbio@ELKbiotech.com

www.elkbiotech.com

23-2, No.388 Gaoxin 2nd Road, Wuhan East Lake Hi-tech Development Zone, Hubei, P.R.C.