

ASCC1 rabbit pAb

Cat No.:ES18235

For research use only

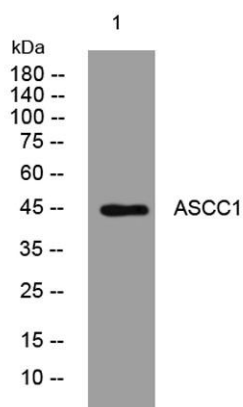
Overview

Product Name	ASCC1 rabbit pAb
Host species	Rabbit
Applications	WB
Species Cross-Reactivity	Human; Mouse
Recommended dilutions	WB 1: 500-2000
Immunogen	Synthesized peptide derived from human ASCC1 AA range: 289-339
Specificity	This antibody detects endogenous levels of ASCC1 at Human/Mouse
Formulation	Liquid in PBS containing 50% glycerol, 0.5% BSA and 0.02% sodium azide.
Storage	Store at -20°C. Avoid repeated freeze-thaw cycles.
Protein Name	ASCC1
Gene Name	ASCC1 CGI-18
Cellular localization	Nucleus . Nucleus speckle . Colocalizes with PRPF8 in nuclear speckles in the absence of DNA damage. .
Purification	The antibody was affinity-purified from rabbit antiserum by affinity-chromatography using epitope-specific immunogen.
Clonality	Polyclonal
Concentration	1 mg/ml
Observed band	
Human Gene ID	51008
Human Swiss-Prot Number	Q8N9N2
Alternative Names	
Background	This gene encodes a subunit of the activating signal cointegrator 1 (ASC-1) complex. The ASC-1 complex is a transcriptional coactivator that plays an important role in gene transactivation by multiple transcription factors including activating protein 1 (AP-1), nuclear factor kappa-B (NF-kB) and serum response factor (SRF). The encoded protein contains an N-terminal KH-type RNA-binding motif which is





required for AP-1 transactivation by the ASC-1 complex. Mutations in this gene are associated with Barrett esophagus and esophageal adenocarcinoma. Alternatively spliced transcripts encoding multiple isoforms have been observed for this gene. [provided by RefSeq, Dec 2011],



Western blot analysis of lysates from A549 cells, primary antibody was diluted at 1:1000, 4° over night

