

# ASTL rabbit pAb

Cat No.:ES18225

For research use only

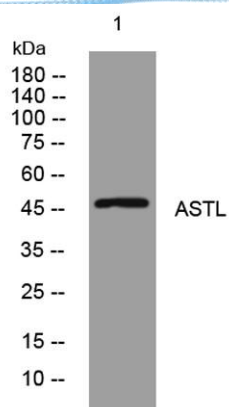
## Overview

Product Name	ASTL rabbit pAb
Host species	Rabbit
Applications	WB
Species Cross-Reactivity	Human; Mouse
Recommended dilutions	WB 1: 500-2000
Immunogen	Synthesized peptide derived from human ASTL AA range: 115-165
Specificity	This antibody detects endogenous levels of ASTL at Human/Mouse
Formulation	Liquid in PBS containing 50% glycerol, 0.5% BSA and 0.02% sodium azide.
Storage	Store at -20°C. Avoid repeated freeze-thaw cycles.
Protein Name	ASTL
Gene Name	ASTL
Cellular localization	Cytoplasm . Cell membrane . Cytoplasmic vesicle, secretory vesicle, Cortical granule . Probably exocytosed from cortical granules during post-fertilization. Detected throughout the ooplasm of germinal vesicle stage oocytes in early bilaminar secondary fol
Purification	The antibody was affinity-purified from rabbit antiserum by affinity-chromatography using epitope-specific immunogen.
Clonality	Polyclonal
Concentration	1 mg/ml
Observed band	
Human Gene ID	431705
Human Swiss-Prot Number	Q6HA08
Alternative Names	
Background	





**ELK Biotechnology**



Western blot analysis of lysates from HEK293 cells,  
primary antibody was diluted at 1:1000, 4° over night



+86-27-59760950

ELKbio@ELKbiotech.com

[www.elkbiotech.com](http://www.elkbiotech.com)

23-2, No.388 Gaoxin 2nd Road, Wuhan East Lake Hi-tech Development Zone, Hubei, P.R.C.