



AT10A rabbit pAb

Cat No.:ES18224

For research use only

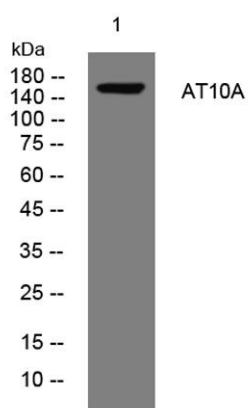
Overview

Product Name	AT10A rabbit pAb
Host species	Rabbit
Applications	WB
Species Cross-Reactivity	Human; Mouse
Recommended dilutions	WB 1: 500-2000
Immunogen	Synthesized peptide derived from human AT10A AA range: 1129-1179
Specificity	This antibody detects endogenous levels of AT10A at Human/Mouse
Formulation	Liquid in PBS containing 50% glycerol, 0.5% BSA and 0.02% sodium azide.
Storage	Store at -20°C. Avoid repeated freeze-thaw cycles.
Protein Name	AT10A
Gene Name	ATP10A ATP10C ATPVA ATPVC KIAA0566
Cellular localization	Cell membrane ; Multi-pass membrane protein . Endoplasmic reticulum membrane . Exit from the endoplasmic reticulum requires the presence of TMEM30A, but not that of TMEM30B.
Purification	The antibody was affinity-purified from rabbit antiserum by affinity-chromatography using epitope-specific immunogen.
Clonality	Polyclonal
Concentration	1 mg/ml
Observed band	
Human Gene ID	57194
Human Swiss-Prot Number	O60312
Alternative Names	
Background	The protein encoded by this gene belongs to the family of P-type cation transport ATPases, and to the subfamily of aminophospholipid-transporting ATPases. The aminophospholipid translocases transport phosphatidylserine and phosphatidylethanolamine from one side of a





bilayer to another. This gene is maternally expressed. It maps within the most common interval of deletion responsible for Angelman syndrome, also known as 'happy puppet syndrome'. [provided by RefSeq, Jul 2008],



Western blot analysis of lysates from PC-12 cells, primary antibody was diluted at 1:1000, 4°over night

