

AT8A1 rabbit pAb

Cat No.:ES18218

For research use only

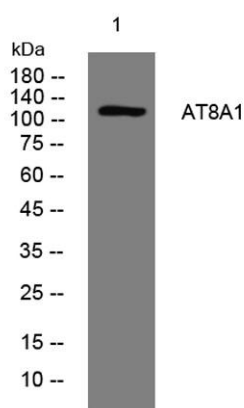
Overview

Product Name	AT8A1 rabbit pAb
Host species	Rabbit
Applications	WB
Species Cross-Reactivity	Human; Mouse
Recommended dilutions	WB 1: 500-2000
Immunogen	Synthesized peptide derived from human AT8A1 AA range: 159-209
Specificity	This antibody detects endogenous levels of AT8A1 at Human/Mouse
Formulation	Liquid in PBS containing 50% glycerol, 0.5% BSA and 0.02% sodium azide.
Storage	Store at -20°C. Avoid repeated freeze-thaw cycles.
Protein Name	AT8A1
Gene Name	ATP8A1 ATP1A
Cellular localization	Cytoplasmic vesicle, secretory vesicle, chromaffin granule membrane ; Multi-pass membrane protein . Cytoplasmic granule . Cell membrane . Endoplasmic reticulum . Golgi apparatus . Exit from the endoplasmic reticulum requires the presence of TMEM30A, but n
Purification	The antibody was affinity-purified from rabbit antiserum by affinity-chromatography using epitope-specific immunogen.
Clonality	Polyclonal
Concentration	1 mg/ml
Observed band	
Human Gene ID	10396
Human Swiss-Prot Number	Q9Y2Q0
Alternative Names	
Background	The P-type adenosinetriphosphatases (P-type ATPases) are a family of proteins which use the free energy of ATP hydrolysis to drive uphill transport of ions across membranes. Several subfamilies of





P-type ATPases have been identified. One subfamily catalyzes transport of heavy metal ions. Another subfamily transports non-heavy metal ions (NMHI). The protein encoded by this gene is a member of the third subfamily of P-type ATPases and acts to transport amphipaths, such as phosphatidylserine. Two transcript variants encoding different isoforms have been found for this gene. [provided by RefSeq, Jul 2008],



Western blot analysis of lysates from 293T cells, primary antibody was diluted at 1:1000, 4° over night

