

ATD3A rabbit pAb

Cat No.:ES18214

For research use only

Overview

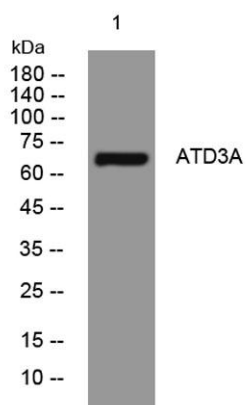
Product Name	ATD3A rabbit pAb
Host species	Rabbit
Applications	WB
Species Cross-Reactivity	Human;Rat;Mouse;
Recommended dilutions	WB 1: 500-2000
Immunogen	Synthesized peptide derived from human ATD3A AA range: 433-483
Specificity	This antibody detects endogenous levels of ATD3A at Human
Formulation	Liquid in PBS containing 50% glycerol, 0.5% BSA and 0.02% sodium azide.
Storage	Store at -20°C. Avoid repeated freeze-thaw cycles.
Protein Name	ATD3A
Gene Name	ATAD3A
Cellular localization	Mitochondrion inner membrane ; Single-pass membrane protein . Mitochondrion matrix, mitochondrion nucleoid . In the mitochondrial inner membrane, enriched in sites with the potential to form contacts with the outer membrane (PubMed:20349121, PubMed:201541
Purification	The antibody was affinity-purified from rabbit antiserum by affinity-chromatography using epitope-specific immunogen.
Clonality	Polyclonal
Concentration	1 mg/ml
Observed band	
Human Gene ID	55210
Human Swiss-Prot Number	Q9NVI7
Alternative Names	
Background	ATAD3A and ATAD3B (MIM 612317) are mitochondrial membrane proteins that contribute to the stabilization of large mitochondrial DNA (mtDNA)-protein complexes called nucleoids (He et





ELK Biotechnology

al., 2007 [PubMed 17210950]).[supplied by OMIM,
Sep 2008],



Western blot analysis of lysates from HpeG2 cells, primary
antibody was diluted at 1:1000, 4°over night



+86-27-59760950

ELKbio@ELKbiotech.com

www.elkbiotech.com

23-2, No.388 Gaoxin 2nd Road,Wuhan East Lake Hi-tech Development Zone, Hubei , P.R.C