



Cacna2d4 rabbit pAb

Cat No.:ES1821

For research use only

Overview

Product Name	Cacna2d4 rabbit pAb
Host species	Rabbit
Applications	WB;ELISA
Species Cross-Reactivity	Human;Mouse;Rat
Recommended dilutions	Western Blot: 1/500 - 1/2000. ELISA: 1/20000. Not yet tested in other applications.
Immunogen	The antiserum was produced against synthesized peptide derived from human CACNA2D4. AA range:548-597
Specificity	Cacna2d4 Polyclonal Antibody detects endogenous levels of Cacna2d4 protein.
Formulation	Liquid in PBS containing 50% glycerol, 0.5% BSA and 0.02% sodium azide.
Storage	Store at -20°C. Avoid repeated freeze-thaw cycles.
Protein Name	Voltage-dependent calcium channel subunit alpha-2/delta-4
Gene Name	CACNA2D4
Cellular localization	Membrane ; Single-pass type I membrane protein .
Purification	The antibody was affinity-purified from rabbit antiserum by affinity-chromatography using epitope-specific immunogen.
Clonality	Polyclonal
Concentration	1 mg/ml
Observed band	130kD
Human Gene ID	93589
Human Swiss-Prot Number	Q7Z3S7
Alternative Names	CACNA2D4; Voltage-dependent calcium channel subunit alpha-2/delta-4; Voltage-gated calcium channel subunit alpha-2/delta-4
Background	calcium voltage-gated channel auxiliary subunit alpha2delta 4(CACNA2D4) Homo sapiens This gene encodes a member of the alpha-2/delta subunit family, a protein in the voltage-dependent

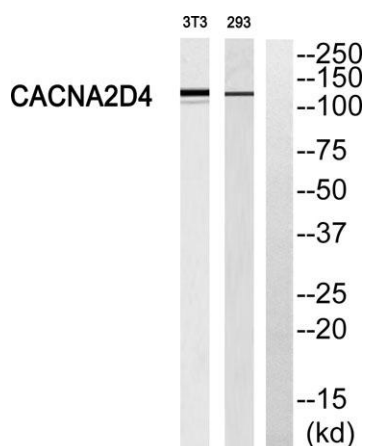




calcium channel complex. Calcium channels mediate the influx of calcium ions into the cell upon membrane polarization and consist of a complex of alpha-1, alpha-2/delta, beta, and gamma subunits in a 1:1:1:1 ratio. Various versions of each of these subunits exist, either expressed from similar genes or the result of alternative splicing. Research on a highly similar protein in rabbit suggests the protein described in this record is cleaved into alpha-2 and delta subunits. Alternate transcriptional splice variants of this gene have been observed but have not been thoroughly characterized. [provided by RefSeq, Jul 2008],



Western Blot analysis of various cells using Cacna2d4 Polyclonal Antibody

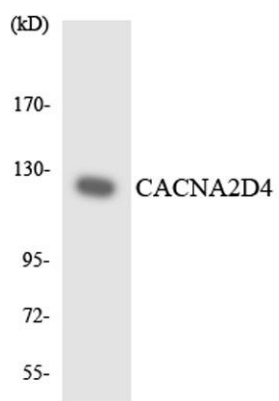


Western blot analysis of CACNA2D4 Antibody. The lane on the right is blocked with the CACNA2D4 peptide.





ELK Biotechnology



Western blot analysis of the lysates from COLO205 cells using CACNA2D4 antibody.



+86-27-59760950

ELKbio@ELKbiotech.com

www.elkbiotech.com

23-2, No.388 Gaoxin 2nd Road, Wuhan East Lake Hi-tech Development Zone, Hubei, P.R.C