



ATG12 rabbit pAb

Cat No.:ES18209

For research use only

Overview

Product Name	ATG12 rabbit pAb
Host species	Rabbit
Applications	WB
Species Cross-Reactivity	Human; Mouse;Rat
Recommended dilutions	WB 1: 500-2000
Immunogen	Synthesized peptide derived from human ATG12 AA range: 80-130
Specificity	This antibody detects endogenous levels of ATG12 at Human/Mouse/Rat
Formulation	Liquid in PBS containing 50% glycerol, 0.5% BSA and 0.02% sodium azide.
Storage	Store at -20°C. Avoid repeated freeze-thaw cycles.
Protein Name	ATG12
Gene Name	ATG12 APG12 APG12L
Cellular localization	Cytoplasm . Preautophagosomal structure membrane ; Peripheral membrane protein . TECPR1 recruits the ATG12-ATG5 conjugate to the autolysosomal membrane.
Purification	The antibody was affinity-purified from rabbit antiserum by affinity-chromatography using epitope-specific immunogen.
Clonality	Polyclonal
Concentration	1 mg/ml
Observed band	
Human Gene ID	9140
Human Swiss-Prot Number	O94817
Alternative Names	
Background	Autophagy is a process of bulk protein degradation in which cytoplasmic components, including organelles, are enclosed in double-membrane structures called autophagosomes and delivered to lysosomes or vacuoles for degradation. ATG12 is the human homolog of a yeast protein involved in

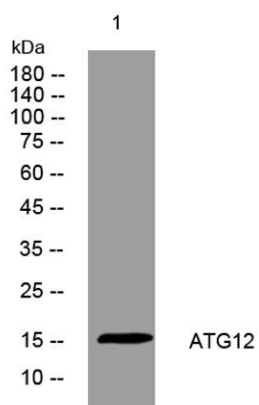




ELK Biotechnology

autophagy (Mizushima et al., 1998 [PubMed 9852036]).[supplied by OMIM, Mar 2008],

Western blot analysis of lysates from HpeG2 cells, primary antibody was diluted at 1:1000, 4°over night



+86-27-59760950

ELKbio@ELKbiotech.com

www.elkbiotech.com

23-2, No.388 Gaoxin 2nd Road,Wuhan East Lake Hi-tech Development Zone, Hubei , P.R.C