

# ATOH1 rabbit pAb

Cat No.:ES18194

For research use only

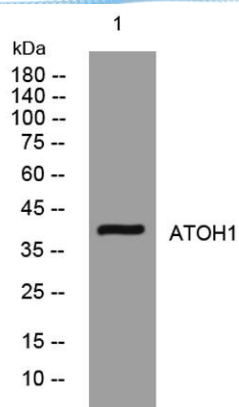
## Overview

Product Name	ATOH1 rabbit pAb
Host species	Rabbit
Applications	WB
Species Cross-Reactivity	Human; Mouse
Recommended dilutions	WB 1:500-2000
Immunogen	Synthesized peptide derived from human ATOH1 AA range: 38-88
Specificity	This antibody detects endogenous levels of ATOH1 at Human/Mouse
Formulation	Liquid in PBS containing 50% glycerol, 0.5% BSA and 0.02% sodium azide.
Storage	Store at -20°C. Avoid repeated freeze-thaw cycles.
Protein Name	ATOH1
Gene Name	ATOH1 ATH1 BHLHA14
Cellular localization	Nucleus .
Purification	The antibody was affinity-purified from rabbit antiserum by affinity-chromatography using epitope-specific immunogen.
Clonality	Polyclonal
Concentration	1 mg/ml
Observed band	38kD
Human Gene ID	474
Human Swiss-Prot Number	Q92858
Alternative Names	Protein atonal homolog 1 (Class A basic helix-loop-helix protein 14) (bHLHa14) (Helix-loop-helix protein hATH-1) (hATH1)
Background	This protein belongs to the basic helix-loop-helix (BHLH) family of transcription factors. It activates E-box dependent transcription along with E47. [provided by RefSeq, Jul 2008],





**ELK Biotechnology**



Western blot analysis of lysates from HCT116 cells,  
primary antibody was diluted at 1:1000, 4° over night



+86-27-59760950

ELKbio@ELKbiotech.com

[www.elkbiotech.com](http://www.elkbiotech.com)

23-2, No.388 Gaoxin 2nd Road, Wuhan East Lake Hi-tech Development Zone, Hubei, P.R.C.