



BAZ1A rabbit pAb

Cat No.:ES18094

For research use only

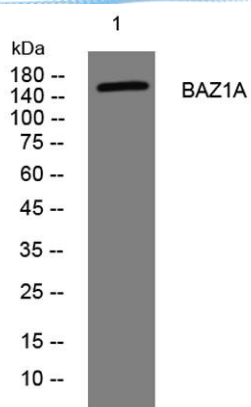
Overview

Product Name	BAZ1A rabbit pAb
Host species	Rabbit
Applications	WB
Species Cross-Reactivity	Human; Mouse
Recommended dilutions	WB 1: 500-2000
Immunogen	Synthesized peptide derived from human BAZ1A AA range: 736-786
Specificity	This antibody detects endogenous levels of BAZ1A at Human/Mouse
Formulation	Liquid in PBS containing 50% glycerol, 0.5% BSA and 0.02% sodium azide.
Storage	Store at -20°C. Avoid repeated freeze-thaw cycles.
Protein Name	BAZ1A
Gene Name	BAZ1A ACF1 WCRF180 HSPC317
Cellular localization	Nucleus. May target the CHRAC complex to heterochromatin.
Purification	The antibody was affinity-purified from rabbit antiserum by affinity-chromatography using epitope-specific immunogen.
Clonality	Polyclonal
Concentration	1 mg/ml
Observed band	
Human Gene ID	11177
Human Swiss-Prot Number	Q9NRL2
Alternative Names	
Background	The BAZ1A gene encodes the accessory subunit of the ATP-dependent chromatin assembly factor (ACF), a member of the ISWI ('imitation switch') family of chromatin remodeling complexes (summarized by Racki et al., 2009 [PubMed 20033039]).[supplied by OMIM, Apr 2010],





ELK Biotechnology



Western blot analysis of lysates from HuvEc cells, primary antibody was diluted at 1:1000, 4° over night



+86-27-59760950

ELKbio@ELKbiotech.com

www.elkbiotech.com

23-2, No.388 Gaoxin 2nd Road, Wuhan East Lake Hi-tech Development Zone, Hubei, P.R.C