

BEAN1 rabbit pAb

Cat No.:ES18078

For research use only

Overview

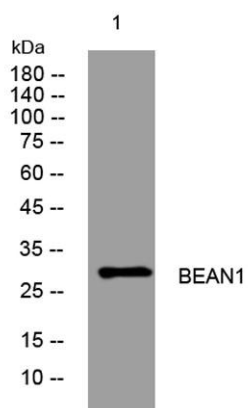
Product Name	BEAN1 rabbit pAb
Host species	Rabbit
Applications	WB
Species Cross-Reactivity	Human; Mouse
Recommended dilutions	wb 1:1000 IP:1:50-200
Immunogen	Synthesized peptide derived from human BEAN1 AA range: 146-196
Specificity	This antibody detects endogenous levels of BEAN1 at Human/Mouse
Formulation	Liquid in PBS containing 50% glycerol, 0.5% BSA and 0.02% sodium azide.
Storage	Store at -20°C. Avoid repeated freeze-thaw cycles.
Protein Name	BEAN1
Gene Name	BEAN1
Cellular localization	Membrane ; Single-pass membrane protein .
Purification	The antibody was affinity-purified from rabbit antiserum by affinity-chromatography using epitope-specific immunogen.
Clonality	Polyclonal
Concentration	1 mg/ml
Observed band	
Human Gene ID	146227
Human Swiss-Prot Number	Q3B7T3
Alternative Names	
Background	The protein encoded by this gene is one of several proteins that interact with NEDD4, a member of a family of ubiquitin-protein ligases. These proteins have PY motifs in common that bind to the WW domains of NEDD4. NEDD4 is developmentally regulated, and is highly expressed in embryonic tissues. Mutations in this gene (i.e., intronic insertions of >100 copies of pentanucleotide repeats including a (TGGAA)n sequence) are associated with





ELK Biotechnology

spinocerebellar ataxia type 31. Alternatively spliced transcript variants encoding different isoforms have been found for this gene. [provided by RefSeq, May 2010],



Western blot analysis of lysates from 3T3 cells, primary antibody was diluted at 1:1000, 4° over night



+86-27-59760950

ELKbio@ELKbiotech.com

www.elkbiotech.com

23-2, No.388 Gaoxin 2nd Road, Wuhan East Lake Hi-tech Development Zone, Hubei, P.R.C.