

# BEND2 rabbit pAb

Cat No.:ES18069

For research use only

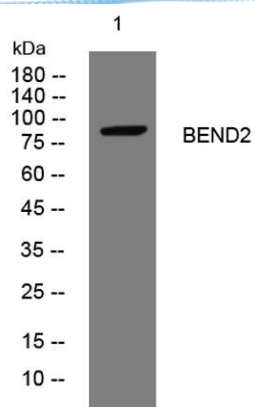
## Overview

Product Name	BEND2 rabbit pAb
Host species	Rabbit
Applications	WB
Species Cross-Reactivity	Human;Rat;Mouse;
Recommended dilutions	WB 1: 500-2000
Immunogen	Synthesized peptide derived from human BEND2 AA range: 48-98
Specificity	This antibody detects endogenous levels of BEND2 at Human
Formulation	Liquid in PBS containing 50% glycerol, 0.5% BSA and 0.02% sodium azide.
Storage	Store at -20°C. Avoid repeated freeze-thaw cycles.
Protein Name	BEND2
Gene Name	BEND2 CXorf20
Cellular localization	
Purification	The antibody was affinity-purified from rabbit antiserum by affinity-chromatography using epitope-specific immunogen.
Clonality	Polyclonal
Concentration	1 mg/ml
Observed band	
Human Gene ID	139105
Human Swiss-Prot Number	Q8NDZ0
Alternative Names	
Background	This gene encodes a protein which has two BEN domains in the C-terminus. These domains are found in proteins which participate in protein and DNA interactions which occur during chromatin restructuring or transcription. Alternative splicing results in multiple transcript variants. [provided by RefSeq, Aug 2011],





**ELK Biotechnology**



Western blot analysis of lysates from KB cells, primary antibody was diluted at 1:1000, 4° over night



+86-27-59760950

ELKbio@ELKbiotech.com

[www.elkbiotech.com](http://www.elkbiotech.com)

23-2, No.388 Gaoxin 2nd Road, Wuhan East Lake Hi-tech Development Zone, Hubei, P.R.C.