

# BMAL2 rabbit pAb

Cat No.:ES17973

For research use only

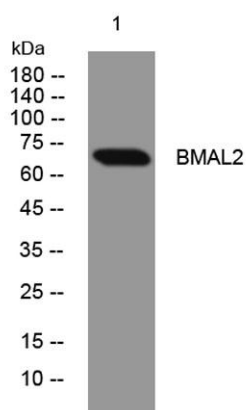
## Overview

Product Name	BMAL2 rabbit pAb
Host species	Rabbit
Applications	WB
Species Cross-Reactivity	Human; Mouse
Recommended dilutions	WB 1: 500-2000
Immunogen	Synthesized peptide derived from human BMAL2 AA range: 495-545
Specificity	This antibody detects endogenous levels of BMAL2 at Human/Mouse
Formulation	Liquid in PBS containing 50% glycerol, 0.5% BSA and 0.02% sodium azide.
Storage	Store at -20°C. Avoid repeated freeze-thaw cycles.
Protein Name	BMAL2
Gene Name	ARNTL2 BHLHE6 BMAL2 CLIF MOP9 PASD9
Cellular localization	Nucleus .
Purification	The antibody was affinity-purified from rabbit antiserum by affinity-chromatography using epitope-specific immunogen.
Clonality	Polyclonal
Concentration	1 mg/ml
Observed band	
Human Gene ID	56938
Human Swiss-Prot Number	Q8WYA1
Alternative Names	
Background	This gene encodes a basic helix-loop-helix transcription factor belonging to the PAS (PER, ARNT, SIM) superfamily. The PAS proteins play important roles in adaptation to low atmospheric and cellular oxygen levels, exposure to certain environmental pollutants, and diurnal oscillations in light and temperature. This protein forms a transcriptionally active heterodimer with the circadian CLOCK protein, the structurally related





MOP4, and hypoxia-inducible factors, such as HIF1alpha. Consistent with its role as a biologically relevant partner of circadian and hypoxia factors, this protein is coexpressed in regions of the brain such as the thalamus, hypothalamus, and amygdala. Alternatively spliced transcript variants encoding different isoforms have been described for this gene. [provided by RefSeq, Oct 2011],



Western blot analysis of lysates from 293T cells, primary antibody was diluted at 1:1000, 4° over night

