

BTBD1 rabbit pAb

Cat No.:ES17946

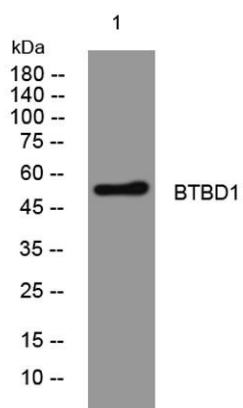
For research use only

Overview

Product Name	BTBD1 rabbit pAb
Host species	Rabbit
Applications	WB
Species Cross-Reactivity	Human; Mouse
Recommended dilutions	WB 1: 500-2000
Immunogen	Synthesized peptide derived from human BTBD1 AA range: 115-165
Specificity	This antibody detects endogenous levels of BTBD1 at Human/Mouse
Formulation	Liquid in PBS containing 50% glycerol, 0.5% BSA and 0.02% sodium azide.
Storage	Store at -20°C. Avoid repeated freeze-thaw cycles.
Protein Name	BTBD1
Gene Name	BTBD1 C15orf1 NS5ATP8
Cellular localization	Cytoplasm . Localizes to punctate or elongated cytoplasmic bodies. .
Purification	The antibody was affinity-purified from rabbit antiserum by affinity-chromatography using epitope-specific immunogen.
Clonality	Polyclonal
Concentration	1 mg/ml
Observed band	
Human Gene ID	53339
Human Swiss-Prot Number	Q9H0C5
Alternative Names	
Background	The C-terminus of the protein encoded by this gene binds topoisomerase I. The N-terminus contains a proline-rich region and a BTB/POZ domain (broad-complex, Tramtrack and bric a brac/Pox virus and Zinc finger), both of which are typically involved in protein-protein interactions. Subcellularly, the protein localizes to cytoplasmic bodies. Alternative splicing results in multiple transcript variants



encoding different isoforms. [provided by RefSeq, Jul 2008],



Western blot analysis of lysates from HuvEc cells, primary antibody was diluted at 1:1000, 4°over night

