

CA146 rabbit pAb

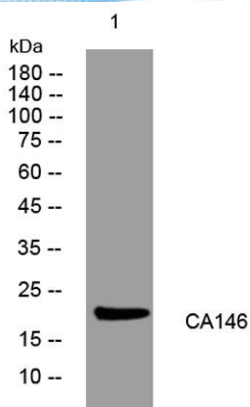
Cat No.:ES17911

For research use only

Overview

| | |
|--------------------------|---|
| Product Name | CA146 rabbit pAb |
| Host species | Rabbit |
| Applications | WB |
| Species Cross-Reactivity | Human; Mouse |
| Recommended dilutions | WB 1: 500-2000 |
| Immunogen | Synthesized peptide derived from human CA146 AA range: 86-136 |
| Specificity | This antibody detects endogenous levels of CA146 at Human/Mouse |
| Formulation | Liquid in PBS containing 50% glycerol, 0.5% BSA and 0.02% sodium azide. |
| Storage | Store at -20°C. Avoid repeated freeze-thaw cycles. |
| Protein Name | CA146 |
| Gene Name | C1orf146 |
| Cellular localization | Chromosome . |
| Purification | The antibody was affinity-purified from rabbit antiserum by affinity-chromatography using epitope-specific immunogen. |
| Clonality | Polyclonal |
| Concentration | 1 mg/ml |
| Observed band | |
| Human Gene ID | 388649 |
| Human Swiss-Prot Number | Q5VVC0 |
| Alternative Names | |
| Background | |





Western blot analysis of lysates from KB cells, primary antibody was diluted at 1:1000, 4° over night

