

CAPS1 rabbit pAb

Cat No.:ES17862

For research use only

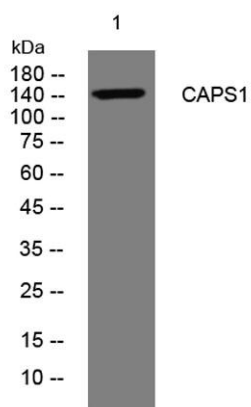
Overview

Product Name	CAPS1 rabbit pAb
Host species	Rabbit
Applications	WB
Species Cross-Reactivity	Human; Mouse;Rat
Recommended dilutions	WB 1: 500-2000
Immunogen	Synthesized peptide derived from human CAPS1 AA range: 1275-1325
Specificity	This antibody detects endogenous levels of CAPS1 at Human/Mouse/Rat
Formulation	Liquid in PBS containing 50% glycerol, 0.5% BSA and 0.02% sodium azide.
Storage	Store at -20°C. Avoid repeated freeze-thaw cycles.
Protein Name	CAPS1
Gene Name	CADPS CAPS CAPS1 KIAA1121
Cellular localization	Cell junction, synapse . Cytoplasmic vesicle, secretory vesicle, neuronal dense core vesicle membrane ; Peripheral membrane protein . Membrane-associated to vesicles. Strongly enriched in synaptic fractions. Preferentially binds to dense core vesicles but
Purification	The antibody was affinity-purified from rabbit antiserum by affinity-chromatography using epitope-specific immunogen.
Clonality	Polyclonal
Concentration	1 mg/ml
Observed band	
Human Gene ID	8618
Human Swiss-Prot Number	Q9ULU8
Alternative Names	
Background	This gene encodes a novel neural/endocrine-specific cytosolic and peripheral membrane protein required for the Ca ²⁺ -regulated exocytosis of secretory vesicles. The protein acts at a stage in exocytosis





that follows ATP-dependent priming, which involves the essential synthesis of phosphatidylinositol 4,5-bisphosphate (PtdIns(4,5)P₂). Alternative splicing has been observed at this locus and three variants, encoding distinct isoforms, are described. [provided by RefSeq, Aug 2008],



Western blot analysis of lysates from SW480 cells, primary antibody was diluted at 1:1000, 4° over night

