

# CASC3 rabbit pAb

Cat No.:ES17854

For research use only

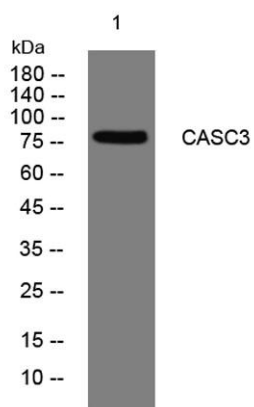
## Overview

Product Name	CASC3 rabbit pAb
Host species	Rabbit
Applications	WB
Species Cross-Reactivity	Human; Mouse;Rat
Recommended dilutions	WB 1: 500-2000
Immunogen	Synthesized peptide derived from human CASC3 AA range: 434-484
Specificity	This antibody detects endogenous levels of CASC3 at Human/Mouse/Rat
Formulation	Liquid in PBS containing 50% glycerol, 0.5% BSA and 0.02% sodium azide.
Storage	Store at -20°C. Avoid repeated freeze-thaw cycles.
Protein Name	CASC3
Gene Name	CASC3 MLN51
Cellular localization	Cytoplasm . Cytoplasm, perinuclear region . Nucleus . Nucleus speckle . Cytoplasm, Stress granule . Cytoplasm, Cytoplasmic ribonucleoprotein granule . Cell projection, dendrite . Shuttles between the nucleus and the cytoplasm in a XPO1/CRM1-dependent mann
Purification	The antibody was affinity-purified from rabbit antiserum by affinity-chromatography using epitope-specific immunogen.
Clonality	Polyclonal
Concentration	1 mg/ml
Observed band	
Human Gene ID	22794
Human Swiss-Prot Number	O15234
Alternative Names	
Background	The product of this gene is a core component of the exon junction complex (EJC), a protein complex that is deposited on spliced mRNAs at exon-exon junctions and functions in nonsense-mediated





mRNA decay (NMD). The encoded protein binds RNA and interacts with two other EJC core components. It is predominantly located in the cytoplasm, but shuttles into the nucleus where it localizes to nuclear speckles. [provided by RefSeq, Jul 2008],



Western blot analysis of lysates from KB cells, primary antibody was diluted at 1:1000, 4° over night

