

# CB082 rabbit pAb

Cat No.:ES17828

For research use only

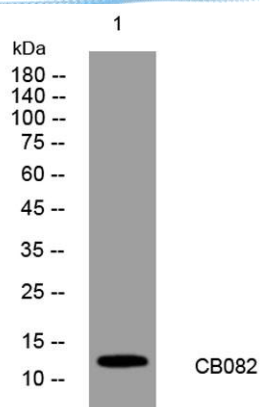
## Overview

Product Name	CB082 rabbit pAb
Host species	Rabbit
Applications	WB
Species Cross-Reactivity	Human; Mouse
Recommended dilutions	WB 1: 500-2000
Immunogen	Synthesized peptide derived from human CB082 AA range: 68-118
Specificity	This antibody detects endogenous levels of CB082 at Human/Mouse
Formulation	Liquid in PBS containing 50% glycerol, 0.5% BSA and 0.02% sodium azide.
Storage	Store at -20°C. Avoid repeated freeze-thaw cycles.
Protein Name	CB082
Gene Name	C2orf82 UNQ830/PRO1757
Cellular localization	Membrane ; Single-pass membrane protein . Cytoplasm . Secreted, extracellular space, extracellular matrix . Appears as reticular-like structures throughout the cytoplasm and adjacent to the plasma membrane. In proliferation and hypertrophic chondrocytes,
Purification	The antibody was affinity-purified from rabbit antiserum by affinity-chromatography using epitope-specific immunogen.
Clonality	Polyclonal
Concentration	1 mg/ml
Observed band	
Human Gene ID	389084
Human Swiss-Prot Number	Q6UX34
Alternative Names	
Background	





**ELK Biotechnology**



Western blot analysis of lysates from 293T cells, primary antibody was diluted at 1:1000, 4° over night



+86-27-59760950

ELKbio@ELKbiotech.com

[www.elkbiotech.com](http://www.elkbiotech.com)

23-2, No.388 Gaoxin 2nd Road, Wuhan East Lake Hi-tech Development Zone, Hubei, P.R.C.