

# CBY1 rabbit pAb

Cat No.:ES17816

For research use only

## Overview

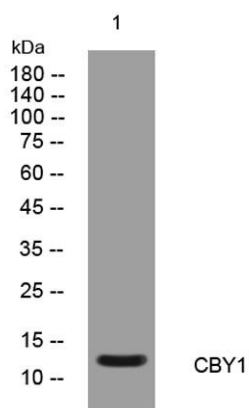
Product Name	CBY1 rabbit pAb
Host species	Rabbit
Applications	WB
Species Cross-Reactivity	Human; Mouse;Rat
Recommended dilutions	WB 1: 500-2000
Immunogen	Synthesized peptide derived from human CBY1 AA range: 71-121
Specificity	This antibody detects endogenous levels of CBY1 at Human/Mouse/Rat
Formulation	Liquid in PBS containing 50% glycerol, 0.5% BSA and 0.02% sodium azide.
Storage	Store at -20°C. Avoid repeated freeze-thaw cycles.
Protein Name	CBY1
Gene Name	CBY1 ARB1 C22orf2 CBY PGEA1 HRIHFB2025
Cellular localization	Nucleus speckle . Cytoplasm, cytoskeleton, cilium basal body . Cytoplasm, cytoskeleton, microtubule organizing center, centrosome, centriole . Golgi apparatus. Golgi apparatus, trans-Golgi network .
Purification	The antibody was affinity-purified from rabbit antiserum by affinity-chromatography using epitope-specific immunogen.
Clonality	Polyclonal
Concentration	1 mg/ml
Observed band	
Human Gene ID	25776
Human Swiss-Prot Number	Q9Y3M2
Alternative Names	
Background	Beta-catenin is a transcriptional activator and oncoprotein involved in the development of several cancers. The protein encoded by this gene interacts directly with the C-terminal region of beta-catenin, inhibiting oncogenic beta-catenin-mediated transcriptional activation by competing with





**ELK Biotechnology**

transcription factors for binding to beta-catenin.  
Two transcript variants encoding different isoforms  
have been found for this gene. [provided by RefSeq,  
Jul 2008],



Western blot analysis of lysates from KB cells, primary  
antibody was diluted at 1:1000, 4° over night



+86-27-59760950

ELKbio@ELKbiotech.com

[www.elkbiotech.com](http://www.elkbiotech.com)

23-2, No.388 Gaoxin 2nd Road, Wuhan East Lake Hi-tech Development Zone, Hubei, P.R.C.