

CC124 rabbit pAb

Cat No.:ES17803

For research use only

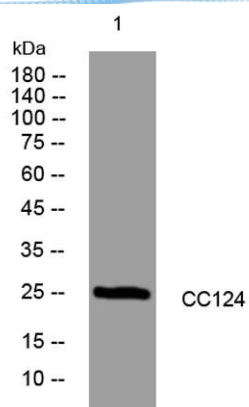
Overview

| | |
|--------------------------|--|
| Product Name | CC124 rabbit pAb |
| Host species | Rabbit |
| Applications | WB |
| Species Cross-Reactivity | Human; Mouse |
| Recommended dilutions | WB 1: 500-2000 |
| Immunogen | Synthesized peptide derived from human CC124 AA range: 56-106 |
| Specificity | This antibody detects endogenous levels of CC124 at Human/Mouse |
| Formulation | Liquid in PBS containing 50% glycerol, 0.5% BSA and 0.02% sodium azide. |
| Storage | Store at -20°C. Avoid repeated freeze-thaw cycles. |
| Protein Name | CC124 |
| Gene Name | CCDC124 |
| Cellular localization | Cytoplasm, cytoskeleton, microtubule organizing center, centrosome . Midbody . Colocalizes with gamma-tubulin at interphase, prophase, metaphase, and anaphase. Relocates from centrosome to midbody at telophase. |
| Purification | The antibody was affinity-purified from rabbit antiserum by affinity-chromatography using epitope-specific immunogen. |
| Clonality | Polyclonal |
| Concentration | 1 mg/ml |
| Observed band | |
| Human Gene ID | 115098 |
| Human Swiss-Prot Number | Q96CT7 |
| Alternative Names | |
| Background | |





ELK Biotechnology



Western blot analysis of lysates from A431 cells, primary antibody was diluted at 1:1000, 4° over night



+86-27-59760950

ELKbio@ELKbiotech.com

www.elkbiotech.com

23-2, No.388 Gaoxin 2nd Road, Wuhan East Lake Hi-tech Development Zone, Hubei, P.R.C.