

# CC146 rabbit pAb

Cat No.:ES17799

For research use only

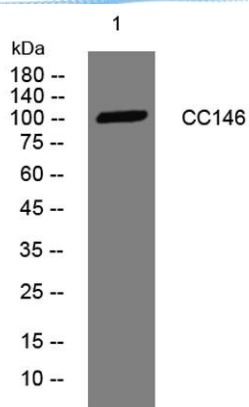
## Overview

Product Name	CC146 rabbit pAb
Host species	Rabbit
Applications	WB
Species Cross-Reactivity	Human;Rat
Recommended dilutions	WB 1:500-2000
Immunogen	Synthesized peptide derived from human CC146 AA range: 765-815
Specificity	This antibody detects endogenous levels of CC146 at Human/Rat
Formulation	Liquid in PBS containing 50% glycerol, 0.5% BSA and 0.02% sodium azide.
Storage	Store at -20°C. Avoid repeated freeze-thaw cycles.
Protein Name	CC146
Gene Name	CCDC146 KIAA1505
Cellular localization	Cytoplasm, cytoskeleton, microtubule organizing center, centrosome, centriole . Localized to only one centriole identified as the mother centriole by co-staining with CEP164. .
Purification	The antibody was affinity-purified from rabbit antiserum by affinity-chromatography using epitope-specific immunogen.
Clonality	Polyclonal
Concentration	1 mg/ml
Observed band	105kD
Human Gene ID	57639
Human Swiss-Prot Number	Q8IYE0
Alternative Names	Coiled-coil domain-containing protein 146
Background	





**ELK Biotechnology**



Western blot analysis of lysates from KB cells, primary antibody was diluted at 1:1000, 4° over night



+86-27-59760950

ELKbio@ELKbiotech.com

[www.elkbiotech.com](http://www.elkbiotech.com)

23-2, No.388 Gaoxin 2nd Road, Wuhan East Lake Hi-tech Development Zone, Hubei, P.R.C.