

CCD14 rabbit pAb

Cat No.:ES17787

For research use only

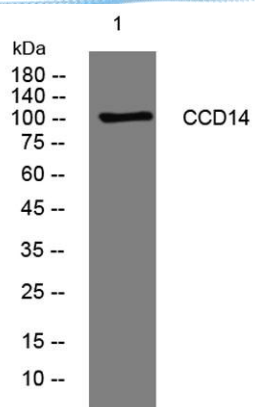
Overview

Product Name	CCD14 rabbit pAb
Host species	Rabbit
Applications	WB
Species Cross-Reactivity	Human; Mouse
Recommended dilutions	WB 1:500-2000
Immunogen	Synthesized peptide derived from human CCD14 AA range: 337-387
Specificity	This antibody detects endogenous levels of CCD14 at Human/Mouse
Formulation	Liquid in PBS containing 50% glycerol, 0.5% BSA and 0.02% sodium azide.
Storage	Store at -20°C. Avoid repeated freeze-thaw cycles.
Protein Name	CCD14
Gene Name	CCDC14
Cellular localization	Cytoplasm, cytoskeleton, microtubule organizing center, centrosome, centriolar satellite . Colocalizes with PCM1 at centriolar satellites throughout the cell cycle. .
Purification	The antibody was affinity-purified from rabbit antiserum by affinity-chromatography using epitope-specific immunogen.
Clonality	Polyclonal
Concentration	1 mg/ml
Observed band	105kD
Human Gene ID	64770
Human Swiss-Prot Number	Q49A88
Alternative Names	Coiled-coil domain-containing protein 14
Background	





ELK Biotechnology



Western blot analysis of lysates from 293T cells, primary antibody was diluted at 1:1000, 4° over night



+86-27-59760950

ELKbio@ELKbiotech.com

www.elkbiotech.com

23-2, No.388 Gaoxin 2nd Road, Wuhan East Lake Hi-tech Development Zone, Hubei, P.R.C.