

# CCD41 rabbit pAb

Cat No.:ES17778

For research use only

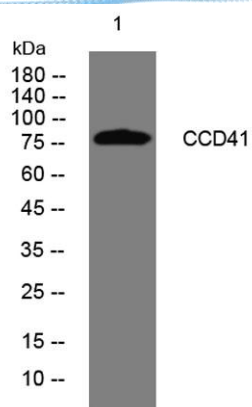
## Overview

Product Name	CCD41 rabbit pAb
Host species	Rabbit
Applications	WB
Species Cross-Reactivity	Human; Mouse;Rat
Recommended dilutions	WB 1: 500-2000
Immunogen	Synthesized peptide derived from human CCD41 AA range: 321-371
Specificity	This antibody detects endogenous levels of CCD41 at Human/Mouse/Rat
Formulation	Liquid in PBS containing 50% glycerol, 0.5% BSA and 0.02% sodium azide.
Storage	Store at -20°C. Avoid repeated freeze-thaw cycles.
Protein Name	CCD41
Gene Name	CCDC41
Cellular localization	Cytoplasm, cytoskeleton, microtubule organizing center, centrosome, centriole . Localizes specifically to the distal appendage region of the centriole, which anchors the mother centriole to the plasma membrane. Localizes to centrioles at all stages of the
Purification	The antibody was affinity-purified from rabbit antiserum by affinity-chromatography using epitope-specific immunogen.
Clonality	Polyclonal
Concentration	1 mg/ml
Observed band	
Human Gene ID	51134
Human Swiss-Prot Number	Q9Y592
Alternative Names	
Background	





**ELK Biotechnology**



Western blot analysis of lysates from HpeG2 cells, primary antibody was diluted at 1:1000, 4° over night



+86-27-59760950

ELKbio@ELKbiotech.com

[www.elkbiotech.com](http://www.elkbiotech.com)

23-2, No.388 Gaoxin 2nd Road, Wuhan East Lake Hi-tech Development Zone, Hubei, P.R.C.