

CDRT1 rabbit pAb

Cat No.:ES17547

For research use only

Overview

| | |
|--------------------------|---|
| Product Name | CDRT1 rabbit pAb |
| Host species | Rabbit |
| Applications | WB |
| Species Cross-Reactivity | Human;Rat;Mouse; |
| Recommended dilutions | WB 1: 500-2000 |
| Immunogen | Synthesized peptide derived from human CDRT1 AA range: 364-414 |
| Specificity | This antibody detects endogenous levels of CDRT1 at Human |
| Formulation | Liquid in PBS containing 50% glycerol, 0.5% BSA and 0.02% sodium azide. |
| Storage | Store at -20°C. Avoid repeated freeze-thaw cycles. |
| Protein Name | CDRT1 |
| Gene Name | CDRT1 C17orf1 C17orf1A HREP |
| Cellular localization | intracellular, |
| Purification | The antibody was affinity-purified from rabbit antiserum by affinity-chromatography using epitope-specific immunogen. |
| Clonality | Polyclonal |
| Concentration | 1 mg/ml |
| Observed band | |
| Human Gene ID | 374286 |
| Human Swiss-Prot Number | O95170 |
| Alternative Names | |
| Background | Members of the F-box protein family, such as FBXW10, are characterized by an approximately 40-amino acid F-box motif. SCF complexes, formed by SKP1 (MIM 601434), cullin (see CUL1; MIM 603034), and F-box proteins, act as protein-ubiquitin ligases. F-box proteins interact with SKP1 through the F box, and they interact with ubiquitination targets through other protein interaction domains (Jin et al., 2004 [PubMed 15520277]).[supplied by |

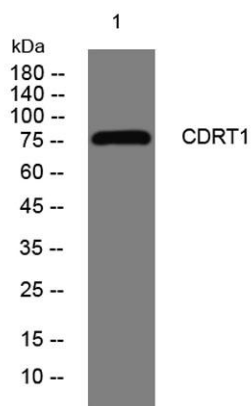




ELK Biotechnology

OMIM, Mar 2008],

Western blot analysis of lysates from SH-SY5Y cells,
primary antibody was diluted at 1:1000, 4° over night



+86-27-59760950

ELKbio@ELKbiotech.com

www.elkbiotech.com

23-2, No.388 Gaoxin 2nd Road, Wuhan East Lake Hi-tech Development Zone, Hubei, P.R.C.