

CDY2 rabbit pAb

Cat No.:ES17538

For research use only

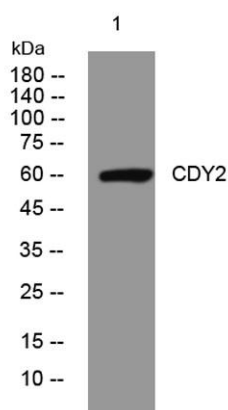
Overview

Product Name	CDY2 rabbit pAb
Host species	Rabbit
Applications	WB
Species Cross-Reactivity	Human;Rat;Mouse;
Recommended dilutions	WB 1: 500-2000
Immunogen	Synthesized peptide derived from human CDY2 AA range: 434-484
Specificity	This antibody detects endogenous levels of CDY2 at Human
Formulation	Liquid in PBS containing 50% glycerol, 0.5% BSA and 0.02% sodium azide.
Storage	Store at -20°C. Avoid repeated freeze-thaw cycles.
Protein Name	CDY2
Gene Name	CDY2A CDY2; CDY2B
Cellular localization	Nucleus .
Purification	The antibody was affinity-purified from rabbit antiserum by affinity-chromatography using epitope-specific immunogen.
Clonality	Polyclonal
Concentration	1 mg/ml
Observed band	
Human Gene ID	203611
Human Swiss-Prot Number	Q9Y6F7
Alternative Names	
Background	This intronless gene encodes a protein containing a chromodomain and a histone acetyltransferase catalytic domain. Chromodomain proteins are components of heterochromatin-like complexes and can act as gene repressors. This protein is localized to the nucleus of late spermatids where histone hyperacetylation takes place. Histone hyperacetylation is thought to facilitate the transition in which protamines replace histones as





the major DNA-packaging protein. Two nearly identical copies of this gene are found in a palindromic region on chromosome Y; this record represents the telomeric copy. Chromosome Y also contains a pair of closely related genes in another more telomeric palindrome as well as several related pseudogenes. [provided by RefSeq, Jul 2008],



Western blot analysis of lysates from HpeG2 cells, primary antibody was diluted at 1:1000, 4° over night

