

CE112 rabbit pAb

Cat No.:ES17530

For research use only

Overview

Product Name	CE112 rabbit pAb
Host species	Rabbit
Applications	WB
Species Cross-Reactivity	Human; Mouse
Recommended dilutions	WB 1:500-2000
Immunogen	Synthesized peptide derived from human CE112 AA range: 475-525
Specificity	This antibody detects endogenous levels of CE112 at Human/Mouse
Formulation	Liquid in PBS containing 50% glycerol, 0.5% BSA and 0.02% sodium azide.
Storage	Store at -20°C. Avoid repeated freeze-thaw cycles.
Protein Name	CE112
Gene Name	CEP112 CCDC46
Cellular localization	Cytoplasm, cytoskeleton, microtubule organizing center, centrosome . Localizes around spindle poles in some cells. .
Purification	The antibody was affinity-purified from rabbit antiserum by affinity-chromatography using epitope-specific immunogen.
Clonality	Polyclonal
Concentration	1 mg/ml
Observed band	105kD
Human Gene ID	201134
Human Swiss-Prot Number	Q8N8E3
Alternative Names	Centrosomal protein of 112 kDa (Coiled-coil domain-containing protein 46)
Background	This gene encodes a coiled-coil domain containing protein that belongs to the cell division control protein 42 effector protein family. In neurons, it localizes to the cytoplasm of dendrites and is also enriched in the nucleus where it interacts with the RNA polymerase III transcriptional repressor Maf1 to

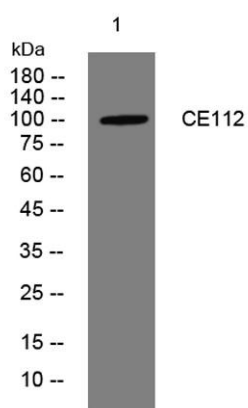




ELK Biotechnology

regulate gamma-aminobutyric acid A receptor surface expression. In addition, the protein has been identified as a component of the human centrosome. Alternative splicing results in multiple transcript variants. [provided by RefSeq, Nov 2014],

Western blot analysis of lysates from HpeG2 cells, primary antibody was diluted at 1:1000, 4°over night



+86-27-59760950

ELKbio@ELKbiotech.com

www.elkbiotech.com

23-2, No.388 Gaoxin 2nd Road, Wuhan East Lake Hi-tech Development Zone, Hubei, P.R.C.