

CENP-M rabbit pAb

Cat No.:ES17525

For research use only

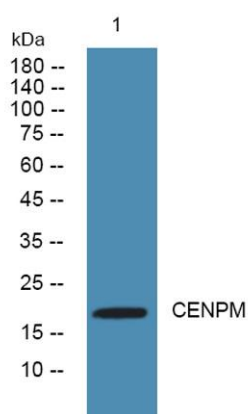
Overview

Product Name	CENP-M rabbit pAb
Host species	Rabbit
Applications	IHC;IF;WB
Species Cross-Reactivity	Human;Rat;Mouse;
Recommended dilutions	IHC-p 1:50-200, WB 1:500-2000
Immunogen	Synthesized peptide derived from human CENP-M AA range: 30-110
Specificity	This antibody detects endogenous levels of human CENP-M
Formulation	Liquid in PBS containing 50% glycerol, 0.5% BSA and 0.02% sodium azide.
Storage	Store at -20°C. Avoid repeated freeze-thaw cycles.
Protein Name	CENP-M
Gene Name	CENPM C22orf18 ICEN39 PANE1
Cellular localization	Nucleus. Cytoplasm. Chromosome, centromere, kinetochore. Nuclear in non-confluent cells and cytoplasmic in confluent or dividing cells (By similarity). Localizes in the kinetochore domain of centromeres. .
Purification	The antibody was affinity-purified from rabbit antiserum by affinity-chromatography using epitope-specific immunogen.
Clonality	Polyclonal
Concentration	1 mg/ml
Observed band	20kD
Human Gene ID	79019
Human Swiss-Prot Number	Q9NSP4
Alternative Names	Centromere protein M (CENP-M;Interphase centromere complex protein 39;Proliferation-associated nuclear element protein 1)
Background	The protein encoded by this gene is an inner protein of the kinetochore, the multi-protein complex that

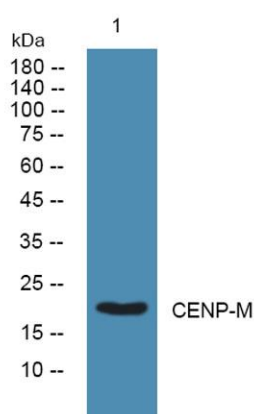




binds spindle microtubules to regulate chromosome segregation during cell division. It belongs to the constitutive centromere-associated network protein group, whose members interact with outer kinetochore proteins and help to maintain centromere identity at each cell division cycle. The protein is structurally related to GTPases but cannot bind guanosine triphosphate. A point mutation that affects interaction with another constitutive centromere-associated network protein, CENP-I, impairs kinetochore assembly and chromosome alignment, suggesting that it is required for kinetochore formation. Alternative splicing results in multiple transcript variants. [provided by RefSeq, Jan 2015],



Western blot analysis of lysates from SW480 cells, primary antibody was diluted at 1:1000, 4°over night

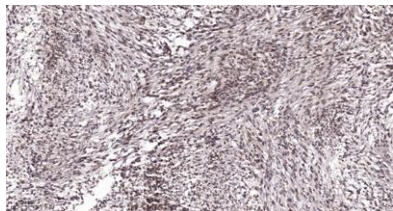


Western blot analysis of lysates from SH-SY5Y cells, primary antibody was diluted at 1:1000, 4°over night





ELK Biotechnology



Immunohistochemical analysis of paraffin-embedded human Colon cancer. 1, Antibody was diluted at 1:200(4° overnight). 2, Tris-EDTA,pH9.0 was used for antigen retrieval. 3,Secondary antibody was diluted at 1:200(room temperature, 45min).



+86-27-59760950

ELKbio@ELKbiotech.com

www.elkbiotech.com

23-2, No.388 Gaoxin 2nd Road,Wuhan East Lake Hi-tech Development Zone, Hubei , P.R.C