

CEP44 rabbit pAb

Cat No.:ES17523

For research use only

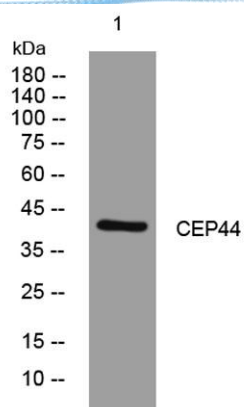
Overview

Product Name	CEP44 rabbit pAb
Host species	Rabbit
Applications	WB
Species Cross-Reactivity	Human; Mouse;Rat
Recommended dilutions	WB 1: 500-2000
Immunogen	Synthesized peptide derived from human CEP44 AA range: 298-348
Specificity	This antibody detects endogenous levels of CEP44 at Human/Mouse/Rat
Formulation	Liquid in PBS containing 50% glycerol, 0.5% BSA and 0.02% sodium azide.
Storage	Store at -20°C. Avoid repeated freeze-thaw cycles.
Protein Name	CEP44
Gene Name	CEP44 KIAA1712
Cellular localization	Cytoplasm, cytoskeleton, microtubule organizing center, centrosome . Cytoplasm, cytoskeleton, microtubule organizing center, centrosome, centriole . Cytoplasm, cytoskeleton, spindle pole . Midbody . Localizes to the proximal end of mother and daughter cen
Purification	The antibody was affinity-purified from rabbit antiserum by affinity-chromatography using epitope-specific immunogen.
Clonality	Polyclonal
Concentration	1 mg/ml
Observed band	
Human Gene ID	80817
Human Swiss-Prot Number	Q9C0F1
Alternative Names	
Background	





ELK Biotechnology



Western blot analysis of lysates from HEK293 cells,
primary antibody was diluted at 1:1000, 4° over night



+86-27-59760950

ELKbio@ELKbiotech.com

www.elkbiotech.com

23-2, No.388 Gaoxin 2nd Road, Wuhan East Lake Hi-tech Development Zone, Hubei, P.R.C.