

CHD7 rabbit pAb

Cat No.:ES17482

For research use only

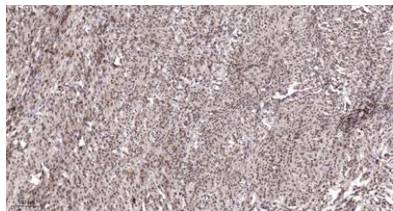
Overview

Product Name	CHD7 rabbit pAb
Host species	Rabbit
Applications	IHC;IF
Species Cross-Reactivity	Human; Mouse
Recommended dilutions	IHC-p 1: 50-200
Immunogen	Synthesized peptide derived from human CHD7 AA range: 1703-1753
Specificity	This antibody detects endogenous levels of CHD7 at Human/Mouse
Formulation	Liquid in PBS containing 50% glycerol, 0.5% BSA and 0.02% sodium azide.
Storage	Store at -20°C. Avoid repeated freeze-thaw cycles.
Protein Name	CHD7
Gene Name	CHD7 KIAA1416
Cellular localization	[Isoform 1]: Nucleus .; [Isoform 3]: Nucleus, nucleolus .
Purification	The antibody was affinity-purified from rabbit antiserum by affinity-chromatography using epitope-specific immunogen.
Clonality	Polyclonal
Concentration	1 mg/ml
Observed band	
Human Gene ID	55636
Human Swiss-Prot Number	Q9P2D1
Alternative Names	
Background	This gene encodes a protein that contains several helicase family domains. Mutations in this gene have been found in some patients with the CHARGE syndrome. Two transcript variants encoding different isoforms have been found for this gene. [provided by RefSeq, Oct 2015],





ELK Biotechnology



Immunohistochemical analysis of paraffin-embedded human Colon cancer. 1, Antibody was diluted at 1:200(4° overnight). 2, Tris-EDTA,pH9.0 was used for antigen retrieval. 3,Secondary antibody was diluted at 1:200(room temperature, 45min).



+86-27-59760950

ELKbio@ELKbiotech.com

www.elkbiotech.com

23-2, No.388 Gaoxin 2nd Road,Wuhan East Lake Hi-tech Development Zone, Hubei , P.R.C