

# CHIC2 rabbit pAb

Cat No.:ES17481

For research use only

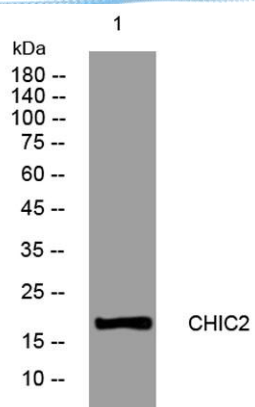
## Overview

Product Name	CHIC2 rabbit pAb
Host species	Rabbit
Applications	WB
Species Cross-Reactivity	Human; Mouse
Recommended dilutions	WB 1: 500-2000
Immunogen	Synthesized peptide derived from human CHIC2 AA range: 111-161
Specificity	This antibody detects endogenous levels of CHIC2 at Human/Mouse
Formulation	Liquid in PBS containing 50% glycerol, 0.5% BSA and 0.02% sodium azide.
Storage	Store at -20°C. Avoid repeated freeze-thaw cycles.
Protein Name	CHIC2
Gene Name	CHIC2 BTL
Cellular localization	Cell membrane . Cytoplasmic vesicle . Also present at a Golgi-like vesicular compartment and at scattered vesicles.
Purification	The antibody was affinity-purified from rabbit antiserum by affinity-chromatography using epitope-specific immunogen.
Clonality	Polyclonal
Concentration	1 mg/ml
Observed band	
Human Gene ID	26511
Human Swiss-Prot Number	Q9UKJ5
Alternative Names	
Background	This gene encodes a member of the CHIC family of proteins. The encoded protein contains a cysteine-rich hydrophobic (CHIC) motif, and is localized to vesicular structures and the plasma membrane. This gene is associated with some cases of acute myeloid leukemia. [provided by RefSeq, Jul 2008],





**ELK Biotechnology**



Western blot analysis of lysates from MDA-MB cells,  
primary antibody was diluted at 1:1000, 4° over night



+86-27-59760950

ELKbio@ELKbiotech.com

[www.elkbiotech.com](http://www.elkbiotech.com)

23-2, No.388 Gaoxin 2nd Road, Wuhan East Lake Hi-tech Development Zone, Hubei, P.R.C.