

CHMP6 rabbit pAb

Cat No.:ES17476

For research use only

Overview

Product Name	CHMP6 rabbit pAb
Host species	Rabbit
Applications	WB
Species Cross-Reactivity	Human; Mouse
Recommended dilutions	WB 1: 500-2000
Immunogen	Synthesized peptide derived from human CHMP6 AA range: 87-137
Specificity	This antibody detects endogenous levels of CHMP6 at Human/Mouse
Formulation	Liquid in PBS containing 50% glycerol, 0.5% BSA and 0.02% sodium azide.
Storage	Store at -20°C. Avoid repeated freeze-thaw cycles.
Protein Name	CHMP6
Gene Name	CHMP6 VPS20
Cellular localization	Endomembrane system. Endosome membrane; Lipid-anchor. Late endosome membrane . Membrane ; Lipid-anchor . Localizes to endosomal membranes.
Purification	The antibody was affinity-purified from rabbit antiserum by affinity-chromatography using epitope-specific immunogen.
Clonality	Polyclonal
Concentration	1 mg/ml
Observed band	
Human Gene ID	79643
Human Swiss-Prot Number	Q96FZ7
Alternative Names	
Background	This gene encodes a member of the chromatin-modifying protein/charged multivesicular body protein family. Proteins in this family are part of the ESCRT-III (endosomal sorting complex required for transport III) which degrades surface receptors, and in biosynthesis of endosomes.

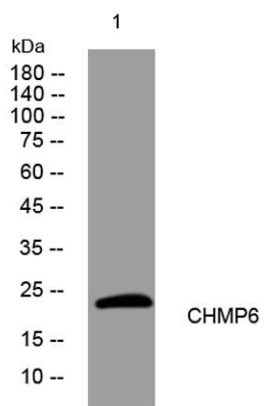




ELK Biotechnology

[provided by RefSeq, Mar 2012],

Western blot analysis of lysates from THP-1 cells, primary antibody was diluted at 1:1000, 4° over night



+86-27-59760950

ELKbio@ELKbiotech.com

www.elkbiotech.com

23-2, No.388 Gaoxin 2nd Road, Wuhan East Lake Hi-tech Development Zone, Hubei, P.R.C.