

# CHMP7 rabbit pAb

Cat No.:ES17475

For research use only

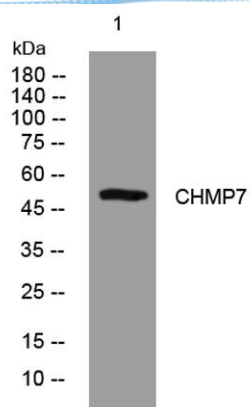
## Overview

Product Name	CHMP7 rabbit pAb
Host species	Rabbit
Applications	WB
Species Cross-Reactivity	Human; Mouse
Recommended dilutions	WB 1: 500-2000
Immunogen	Synthesized peptide derived from human CHMP7 AA range: 145-195
Specificity	This antibody detects endogenous levels of CHMP7 at Human/Mouse
Formulation	Liquid in PBS containing 50% glycerol, 0.5% BSA and 0.02% sodium azide.
Storage	Store at -20°C. Avoid repeated freeze-thaw cycles.
Protein Name	CHMP7
Gene Name	CHMP7
Cellular localization	Cytoplasm . Nucleus envelope . Nucleus envelope . Diffused localization, with some punctate distribution, especially in the perinuclear area (PubMed:16856878). Localizes to the reforming nuclear envelope on chromatin disks during late anaphase (PubMed:260
Purification	The antibody was affinity-purified from rabbit antiserum by affinity-chromatography using epitope-specific immunogen.
Clonality	Polyclonal
Concentration	1 mg/ml
Observed band	
Human Gene ID	91782
Human Swiss-Prot Number	Q8WUX9
Alternative Names	
Background	





**ELK Biotechnology**



Western blot analysis of lysates from VEC cells, primary antibody was diluted at 1:1000, 4° over night



+86-27-59760950

ELKbio@ELKbiotech.com

[www.elkbiotech.com](http://www.elkbiotech.com)

23-2, No.388 Gaoxin 2nd Road, Wuhan East Lake Hi-tech Development Zone, Hubei, P.R.C.