

CHP3 rabbit pAb

Cat No.:ES17472

For research use only

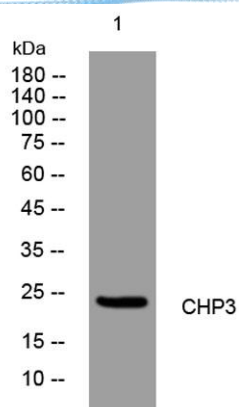
Overview

Product Name	CHP3 rabbit pAb
Host species	Rabbit
Applications	WB
Species Cross-Reactivity	Human; Mouse
Recommended dilutions	WB 1: 500-2000
Immunogen	Synthesized peptide derived from human CHP3 AA range: 20-70
Specificity	This antibody detects endogenous levels of CHP3 at Human/Mouse
Formulation	Liquid in PBS containing 50% glycerol, 0.5% BSA and 0.02% sodium azide.
Storage	Store at -20°C. Avoid repeated freeze-thaw cycles.
Protein Name	CHP3
Gene Name	TESC CHP3
Cellular localization	Nucleus . Cytoplasm . Membrane ; Lipid-anchor . Cell membrane . Cell projection, lamellipodium . Cell projection, ruffle membrane . Colocalizes with SLC9A1 at the plasma membrane. .
Purification	The antibody was affinity-purified from rabbit antiserum by affinity-chromatography using epitope-specific immunogen.
Clonality	Polyclonal
Concentration	1 mg/ml
Observed band	
Human Gene ID	54997
Human Swiss-Prot Number	Q96BS2
Alternative Names	
Background	





ELK Biotechnology



Western blot analysis of lysates from HpeG2 cells, primary antibody was diluted at 1:1000, 4° over night



+86-27-59760950

ELKbio@ELKbiotech.com

www.elkbiotech.com

23-2, No.388 Gaoxin 2nd Road, Wuhan East Lake Hi-tech Development Zone, Hubei, P.R.C.