



# CIR1A rabbit pAb

Cat No.:ES17452

For research use only

## Overview

Product Name	CIR1A rabbit pAb
Host species	Rabbit
Applications	WB
Species Cross-Reactivity	Human; Mouse
Recommended dilutions	WB 1: 500-2000
Immunogen	Synthesized peptide derived from human CIR1A AA range: 313-363
Specificity	This antibody detects endogenous levels of CIR1A at Human/Mouse
Formulation	Liquid in PBS containing 50% glycerol, 0.5% BSA and 0.02% sodium azide.
Storage	Store at -20°C. Avoid repeated freeze-thaw cycles.
Protein Name	CIR1A
Gene Name	CIRH1A KIAA1988
Cellular localization	Nucleus, nucleolus . Chromosome . Found predominantly at the fibrillar center. .
Purification	The antibody was affinity-purified from rabbit antiserum by affinity-chromatography using epitope-specific immunogen.
Clonality	Polyclonal
Concentration	1 mg/ml
Observed band	
Human Gene ID	84916
Human Swiss-Prot Number	Q969X6
Alternative Names	
Background	This gene encodes a WD40-repeat-containing protein that is localized to the nucleolus. Mutation of this gene causes North American Indian childhood cirrhosis, a severe intrahepatic cholestasis that results in transient neonatal jaundice, and progresses to periportal fibrosis and cirrhosis in childhood and adolescence. Alternative splicing results in multiple transcript variants. [provided by

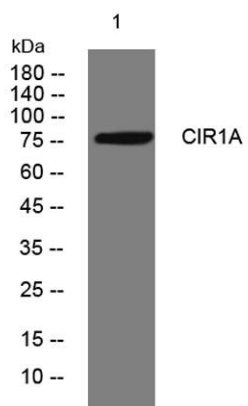




**ELK Biotechnology**

RefSeq, Jan 2016],

Western blot analysis of lysates from Jarkat cells, primary antibody was diluted at 1:1000, 4° over night



+86-27-59760950

ELKbio@ELKbiotech.com

[www.elkbiotech.com](http://www.elkbiotech.com)

23-2, No.388 Gaoxin 2nd Road, Wuhan East Lake Hi-tech Development Zone, Hubei, P.R.C.