

# CK085 rabbit pAb

Cat No.:ES17432

For research use only

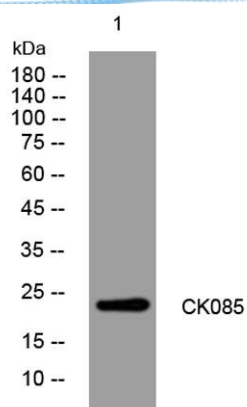
## Overview

Product Name	CK085 rabbit pAb
Host species	Rabbit
Applications	WB
Species Cross-Reactivity	Human; Mouse;Rat
Recommended dilutions	WB 1: 500-2000
Immunogen	Synthesized peptide derived from human CK085 AA range: 58-108
Specificity	This antibody detects endogenous levels of CK085 at Human/Mouse/Rat
Formulation	Liquid in PBS containing 50% glycerol, 0.5% BSA and 0.02% sodium azide.
Storage	Store at -20°C. Avoid repeated freeze-thaw cycles.
Protein Name	CK085
Gene Name	C11orf85
Cellular localization	Nucleus inner membrane ; Single-pass membrane protein . Chromosome, telomere . In leptotene spermatocytes, localizes to telomeres that localize to the nucleus inner membrane. .
Purification	The antibody was affinity-purified from rabbit antiserum by affinity-chromatography using epitope-specific immunogen.
Clonality	Polyclonal
Concentration	1 mg/ml
Observed band	
Human Gene ID	283129
Human Swiss-Prot Number	Q3KP22
Alternative Names	
Background	





**ELK Biotechnology**



Western blot analysis of lysates from A431 cells, primary antibody was diluted at 1:1000, 4° over night



+86-27-59760950

ELKbio@ELKbiotech.com

[www.elkbiotech.com](http://www.elkbiotech.com)

23-2, No.388 Gaoxin 2nd Road, Wuhan East Lake Hi-tech Development Zone, Hubei, P.R.C.