



CK092 rabbit pAb

Cat No.:ES17430

For research use only

Overview

Product Name	CK092 rabbit pAb
Host species	Rabbit
Applications	WB
Species Cross-Reactivity	Human;Rat;Mouse;
Recommended dilutions	WB 1: 500-2000
Immunogen	Synthesized peptide derived from human CK092 AA range: 40-90
Specificity	This antibody detects endogenous levels of CK092 at Human
Formulation	Liquid in PBS containing 50% glycerol, 0.5% BSA and 0.02% sodium azide.
Storage	Store at -20°C. Avoid repeated freeze-thaw cycles.
Protein Name	CK092
Gene Name	C11orf92
Cellular localization	Membrane ; Single-pass membrane protein . Co-localizes with crystalloid granules of eosinophils and granular organelles of mast cells, neutrophils, macrophages and dendritic cells.
Purification	The antibody was affinity-purified from rabbit antiserum by affinity-chromatography using epitope-specific immunogen.
Clonality	Polyclonal
Concentration	1 mg/ml
Observed band	
Human Gene ID	
Human Swiss-Prot Number	Q6ZS62
Alternative Names	
Background	This gene encodes a transmembrane protein that localizes to granular structures, including crystalloid eosinophilic granules and other granular organelles. This gene, along with an overlapping opposite strand gene, has been implicated as a susceptibility locus for colorectal cancer. Alternative splicing of

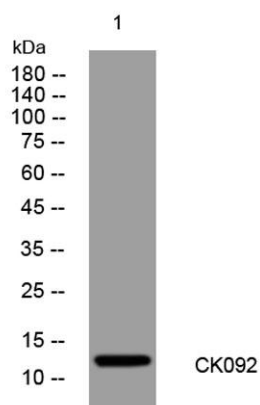




ELK Biotechnology

this gene results in multiple transcript variants.
[provided by RefSeq, Nov 2014],

Western blot analysis of lysates from Hela cells, primary
antibody was diluted at 1:1000, 4° over night



+86-27-59760950

ELKbio@ELKbiotech.com

www.elkbiotech.com

23-2, No.388 Gaoxin 2nd Road, Wuhan East Lake Hi-tech Development Zone, Hubei, P.R.C.