

CLD24 rabbit pAb

Cat No.:ES17380

For research use only

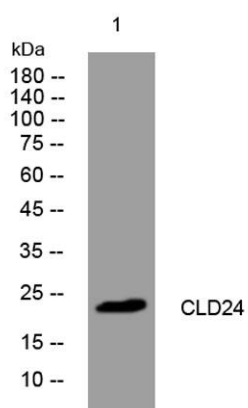
Overview

Product Name	CLD24 rabbit pAb
Host species	Rabbit
Applications	WB
Species Cross-Reactivity	Human;Rat;Mouse;
Recommended dilutions	WB 1: 500-2000
Immunogen	Synthesized peptide derived from human CLD24 AA range: 78-128
Specificity	This antibody detects endogenous levels of CLD24 at Human
Formulation	Liquid in PBS containing 50% glycerol, 0.5% BSA and 0.02% sodium azide.
Storage	Store at -20°C. Avoid repeated freeze-thaw cycles.
Protein Name	CLD24
Gene Name	CLDN24
Cellular localization	Cell junction, tight junction . Cell membrane ; Multi-pass membrane protein .
Purification	The antibody was affinity-purified from rabbit antiserum by affinity-chromatography using epitope-specific immunogen.
Clonality	Polyclonal
Concentration	1 mg/ml
Observed band	
Human Gene ID	
Human Swiss-Prot Number	A6NM45
Alternative Names	
Background	This gene encodes a member of the claudin family. Claudins are integral membrane proteins and components of tight junction strands. Tight junction strands serve as a physical barrier to prevent solutes and water from passing freely through the paracellular space between epithelial or endothelial cell sheets, and also play critical roles in maintaining cell polarity and signal transductions. The protein





encoded by this gene is 75% identical to the mouse homolog. This gene is upstream of the CLDN22 gene, which overlaps the WWC2 gene on the opposite strand in the genome.[provided by RefSeq, Aug 2010],



Western blot analysis of lysates from AD293 cells, primary antibody was diluted at 1:1000, 4°over night

